

A FEW DECADES OF SLR DATA FOR THE LONG WAVELENGTHS OF THE EARTH'S GRAVITY FIELD

***Florent Deleflie¹, Pierre Exertier, Olivier Laurain¹,
Dominique Feraudy¹, Jean-Michel Lemoine²***

-

¹ Observatoire de la Côte d'Azur, Grasse, France

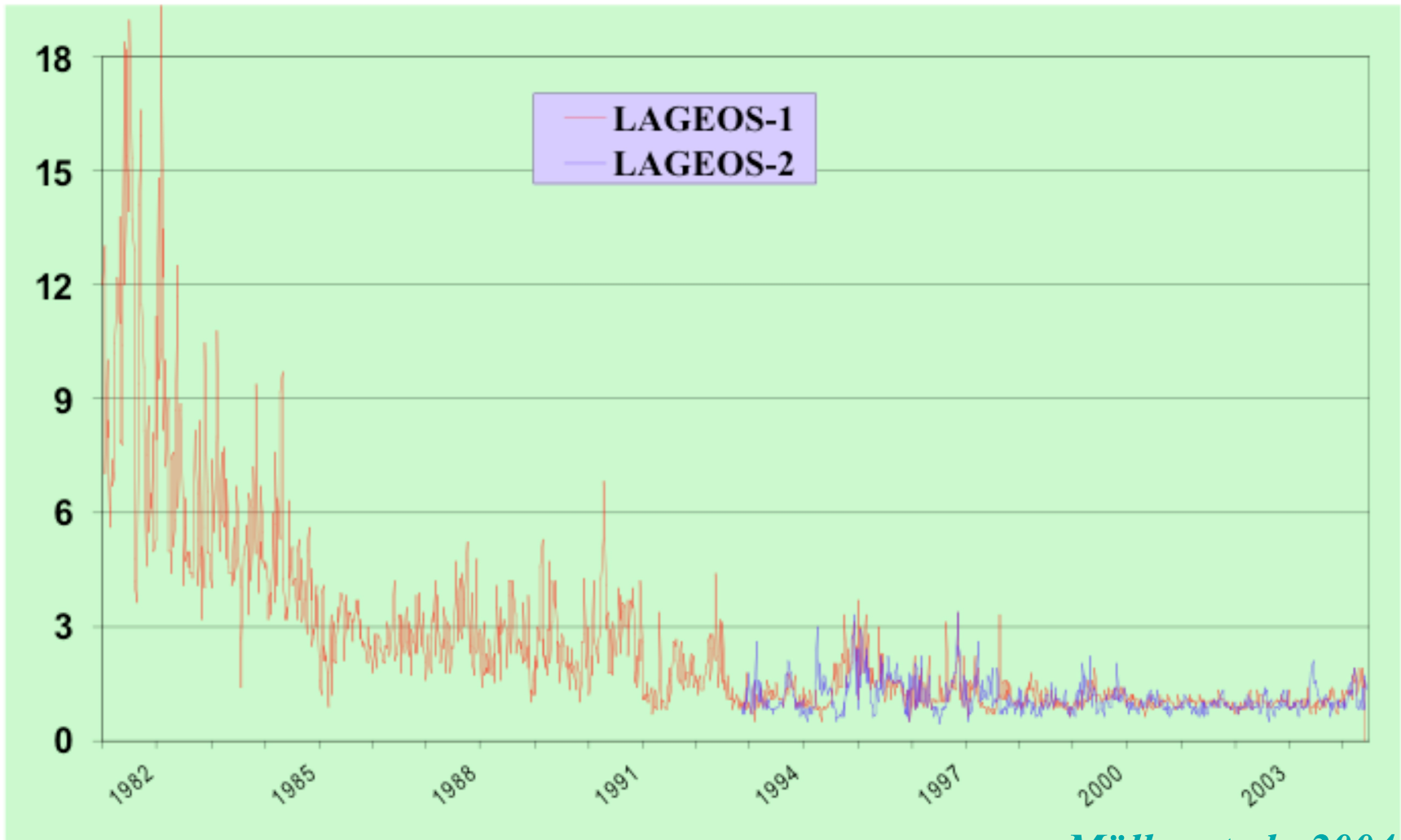
² Centre National d'Etudes Spatiales, Toulouse, France

SLR among other geodetic technics

©	LLR	VLBI	SLR	GPS/ GALILEO	DORIS
Celestial frame		***			
Solar system tie	***	*			
Terrestrial tie					
<i>Precession-Nutation</i>	**	***	*	*	
<i>Universal Time</i>	*	***			
Earth Rotation					
<i>Length of Day</i>		***	*	**	
<i>Polar motion</i>		***	**	***	*
Terrestrial frame					
<i>Network homogeneity</i>		*	*	**	***
<i>Center of mass (GM)</i>			***	*	*
<i>Center of figure</i>		**			
<i>Tectonic motion</i>		***	**	***	***
<i>Densification</i>			*	***	**
Orbitography: high satellites					
<i>GPS/GALILEO -like</i>			*	***	
<i>LAGEOS, ETALON -like</i>			***		
Orbitography: low satellites					
<i>TOPEX/Poséïdon, Jason-1, Jason-2</i>			**	***	***
<i>ERS, ENVISAT - like</i>			**	***	***
<i>CHAMP, GRACE -like</i>			*	***	
Gravity field					
<i>Long wavelengths</i>			***	**	*
<i>Short wavelengths</i>			**	***	**

Residuals analysis

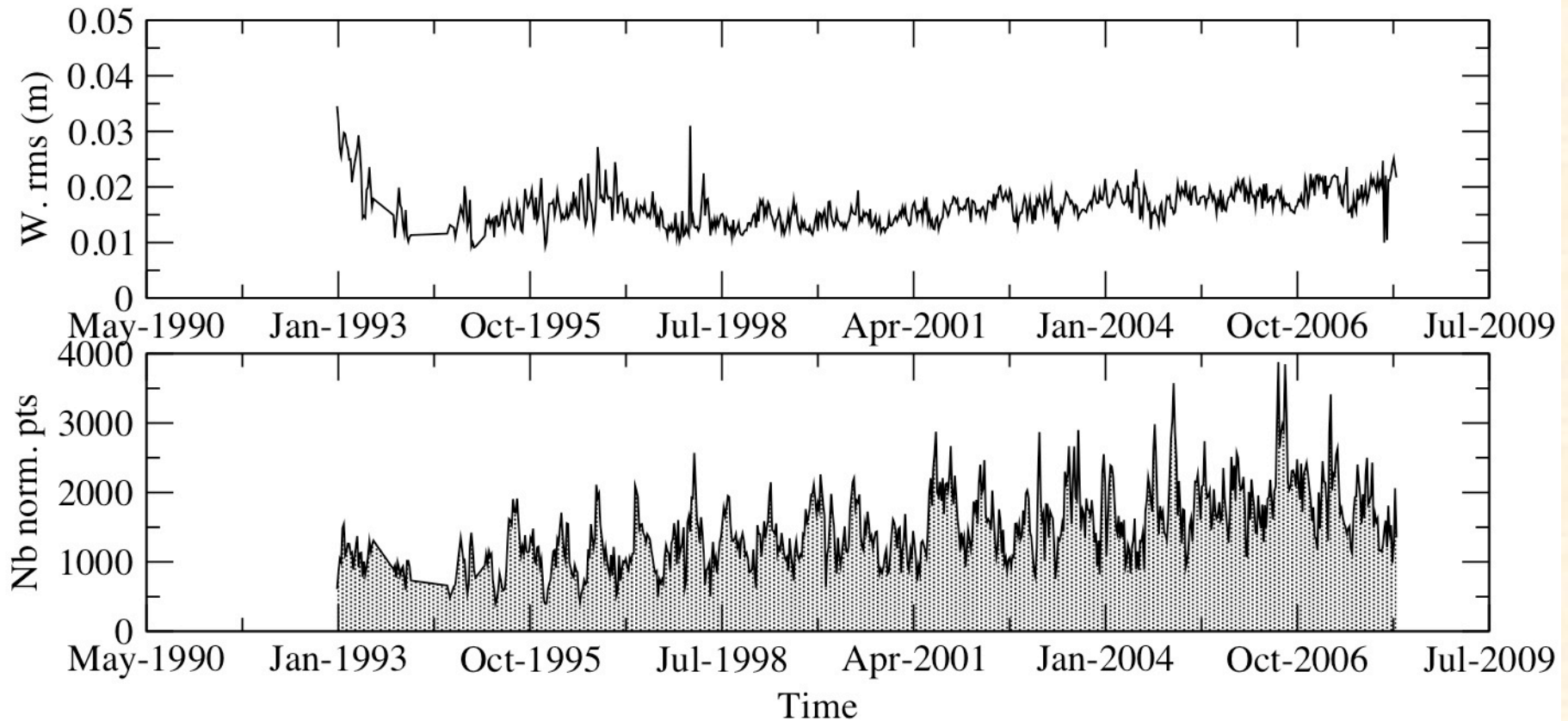
Weekly Orbital Fit [cm]



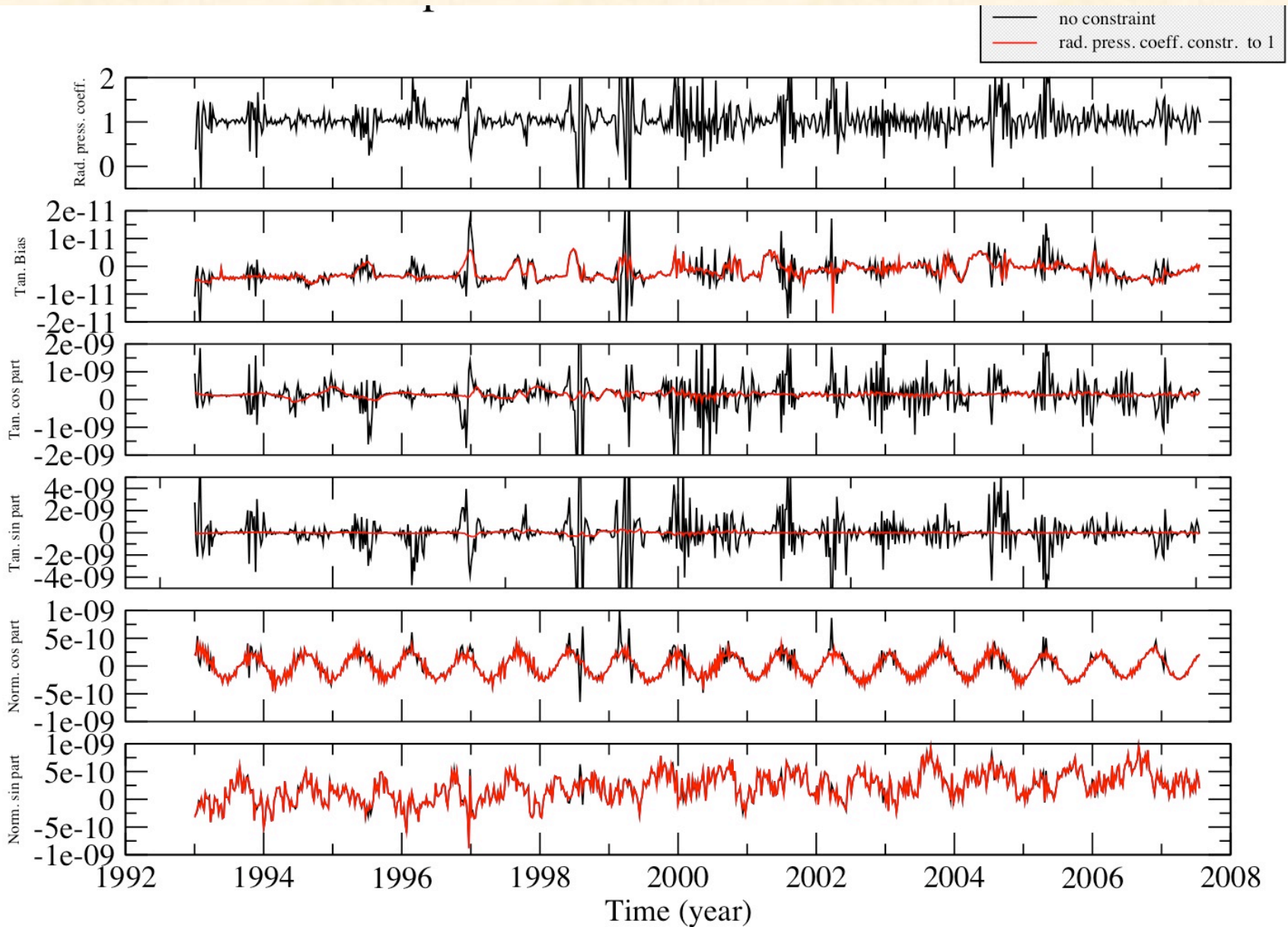
Our own analysis

- LAGEOS modelling

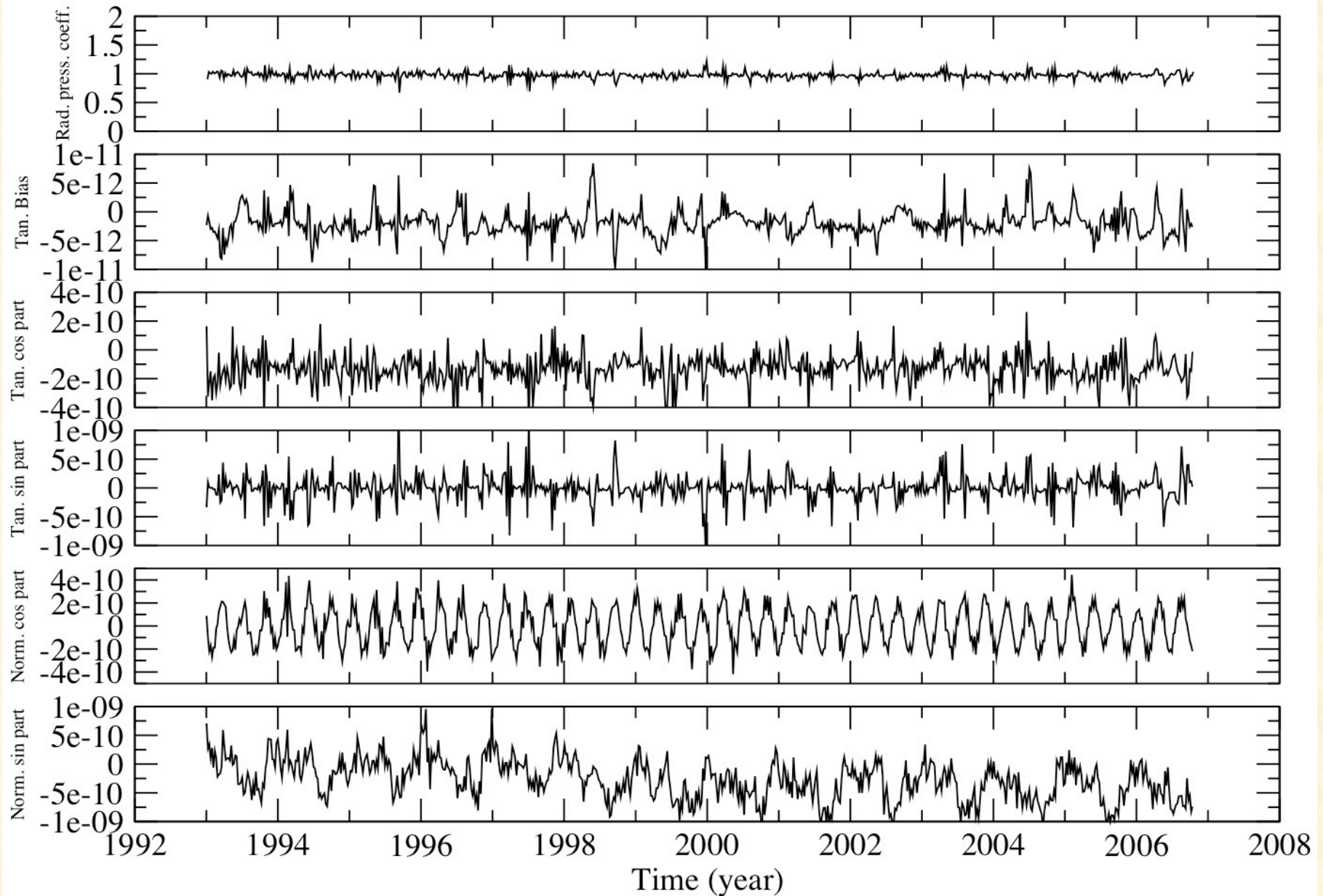
LAGEOS2: residuals



LA1: time series of empirical coefficients

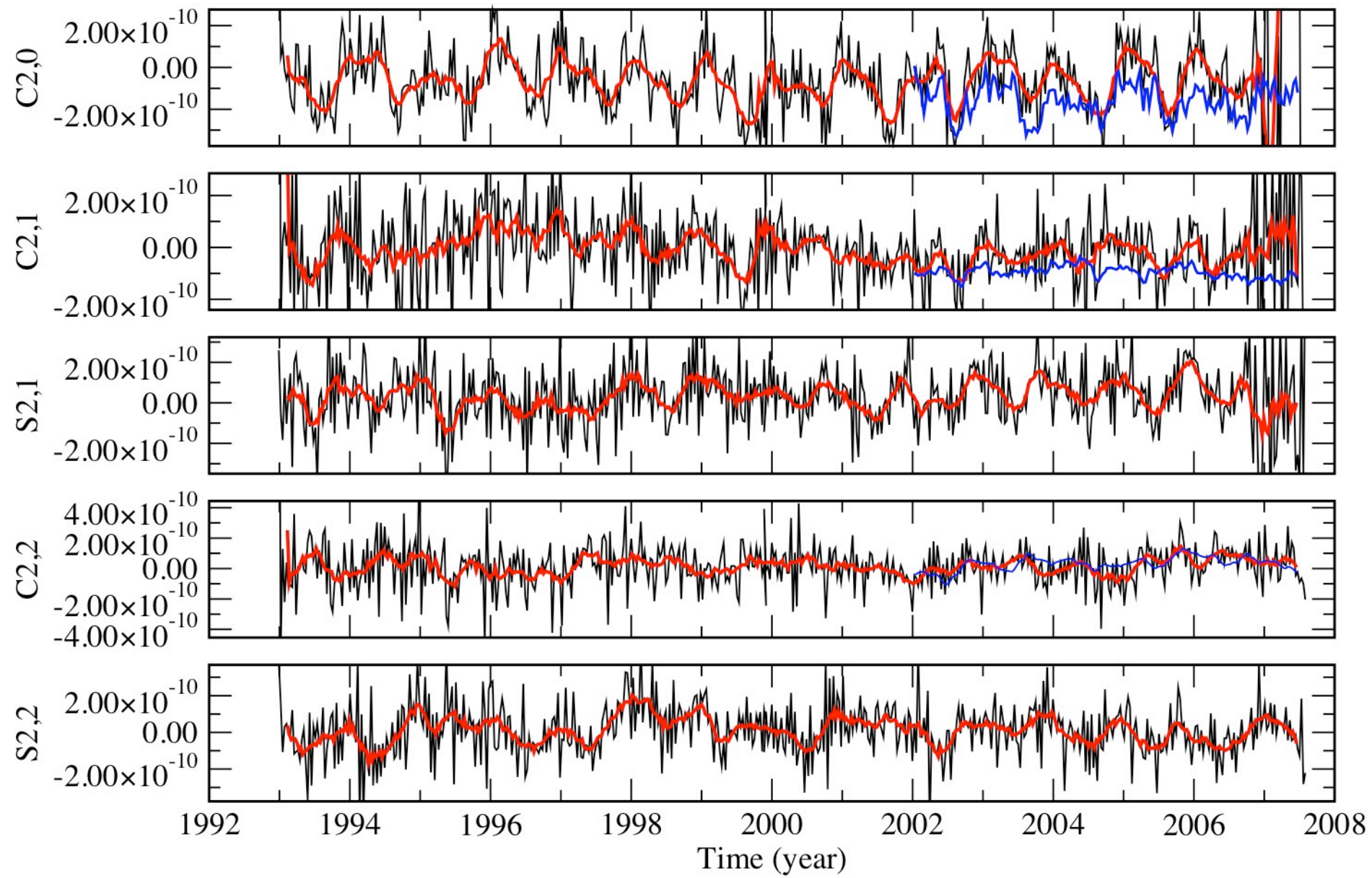
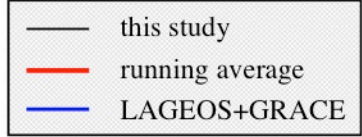


LA2: time series of empirical coefficients



Time series: Degree 2

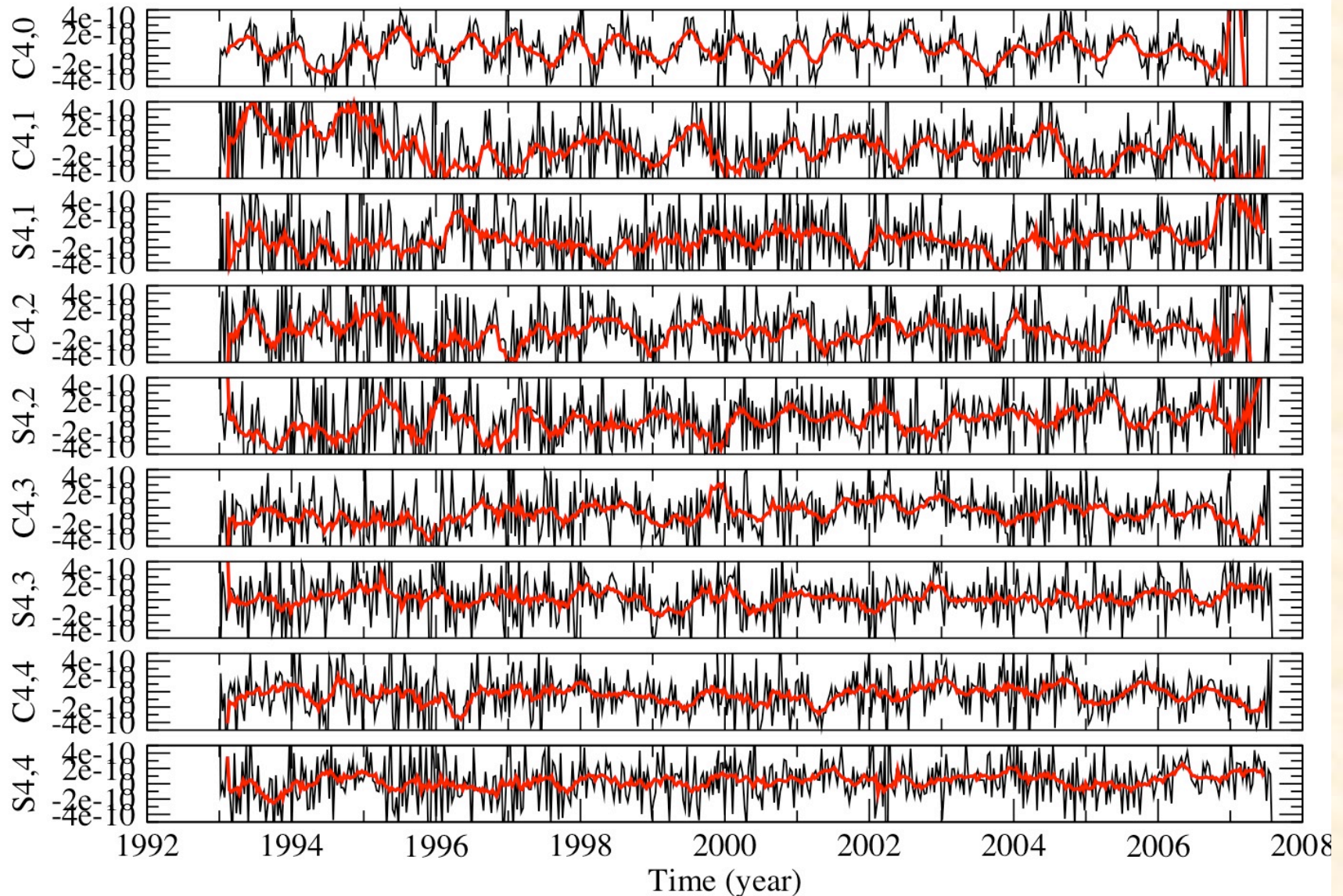
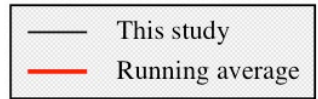
Osculating orbits (deg2 to 5): 1x LA1, 1x LA2



Geopotential: Degree 4

Time series: Degree 4

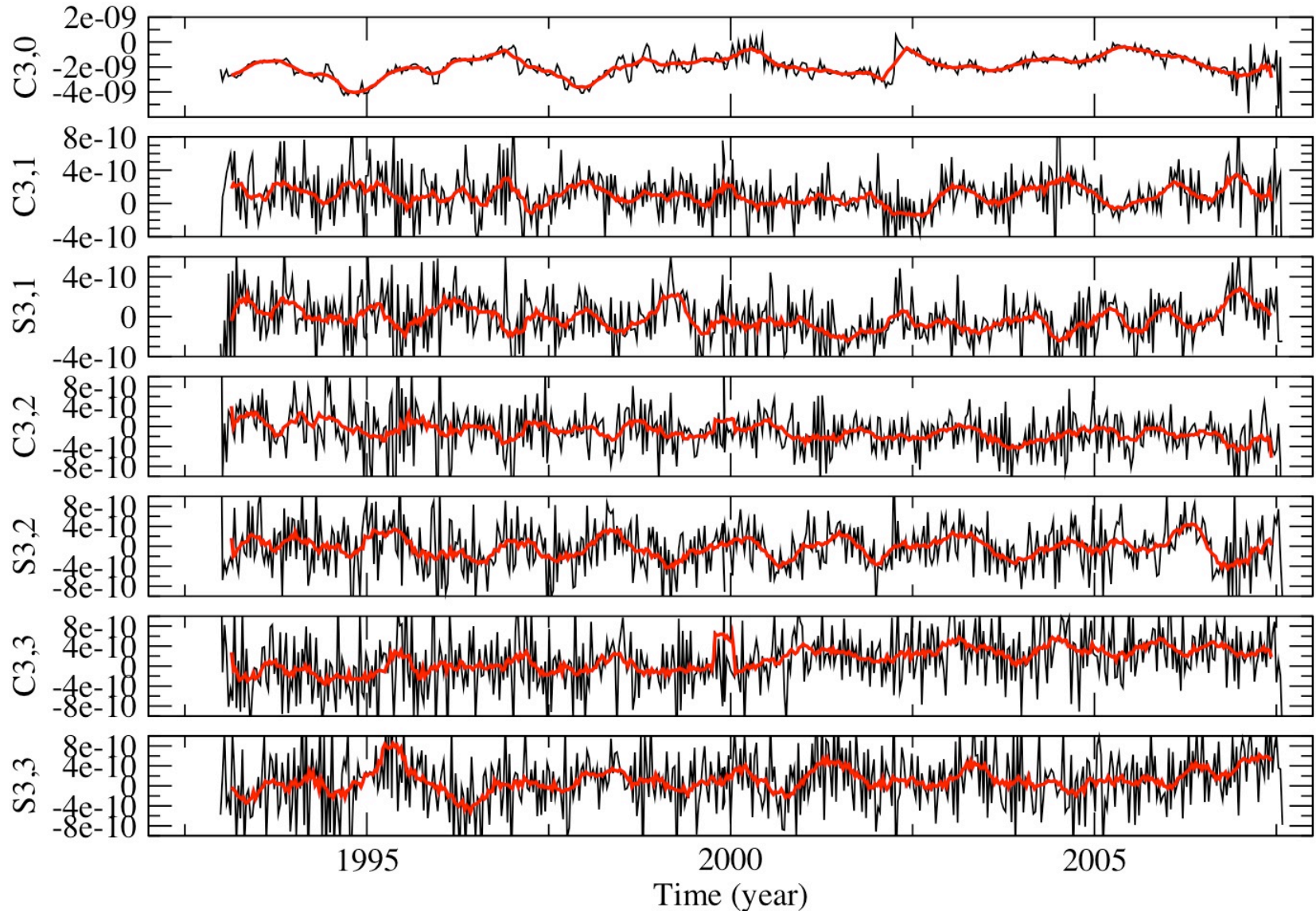
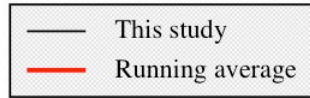
Osculating orbits (deg2 to 5): 1xLA1, 1xLA2



Geopotential: degree 3

Time series: Degree 3

Osculating orbits (deg2 to 5): 1x LA1, 1x LA2



A constellation of geodetic satellites

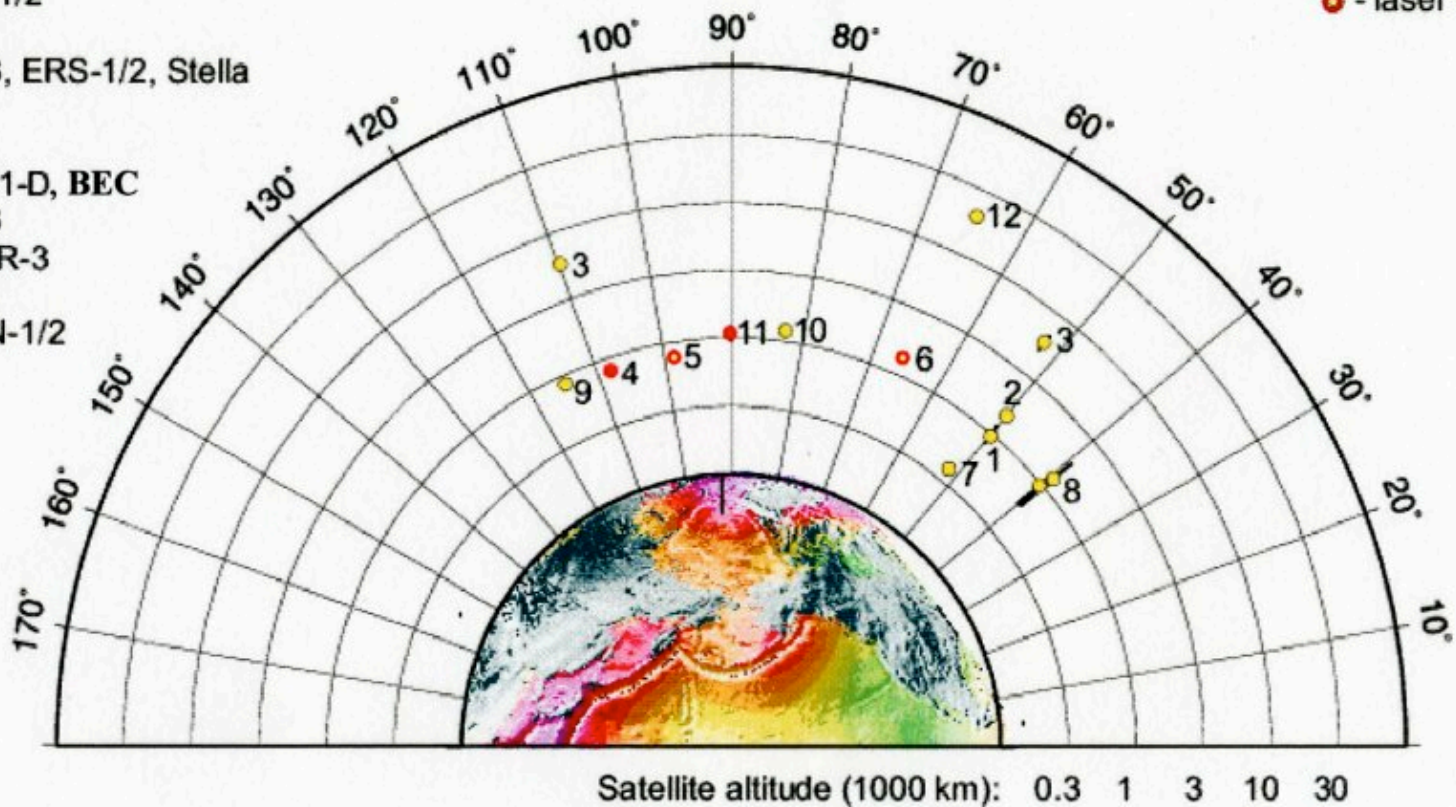
Limited observation accuracy



Various dynamical configurations,
determination of specific sets of harmonics

- 1 Starlette
- 2 Ajisai
- 3 Lageos 1/2
- 4 Geosat
- 5 Spot-2/3, ERS-1/2, Stella
- 6 Topex
- 7 GFZ-1
- 8 D1-C, D1-D, BEC
- 9 GEOS-3
- 10 METEOR-3
- 11 NOVA3
- 12 ETALON-1/2

- - laser
- - microwave
- - laser + microwave

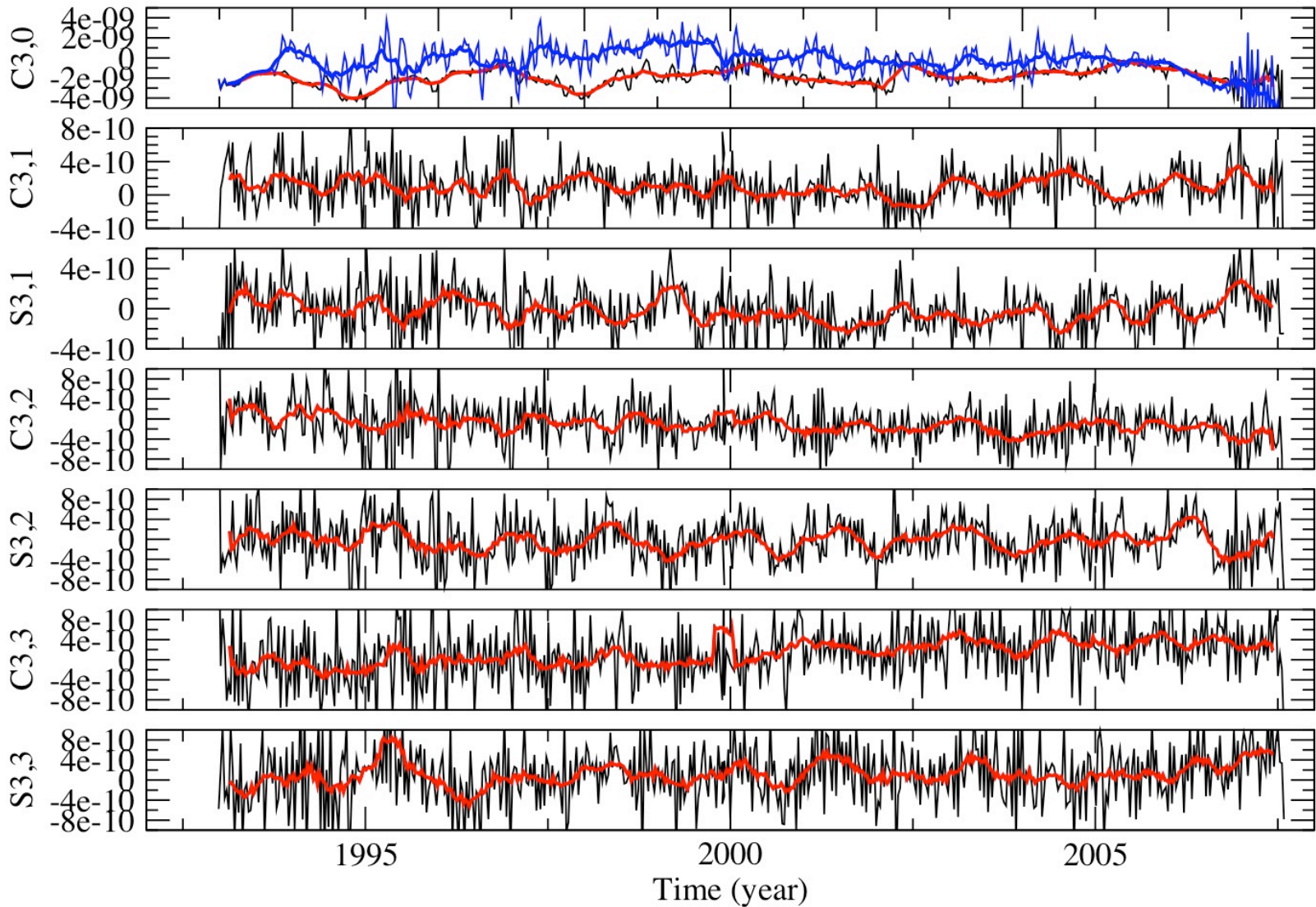
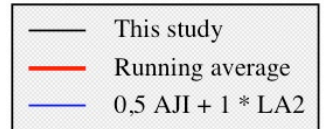


Satellites, orbits and tracking data employed for GRIM5-S1 global gravity field recovery

Geopotential: degree 3

Time series: Degree 3

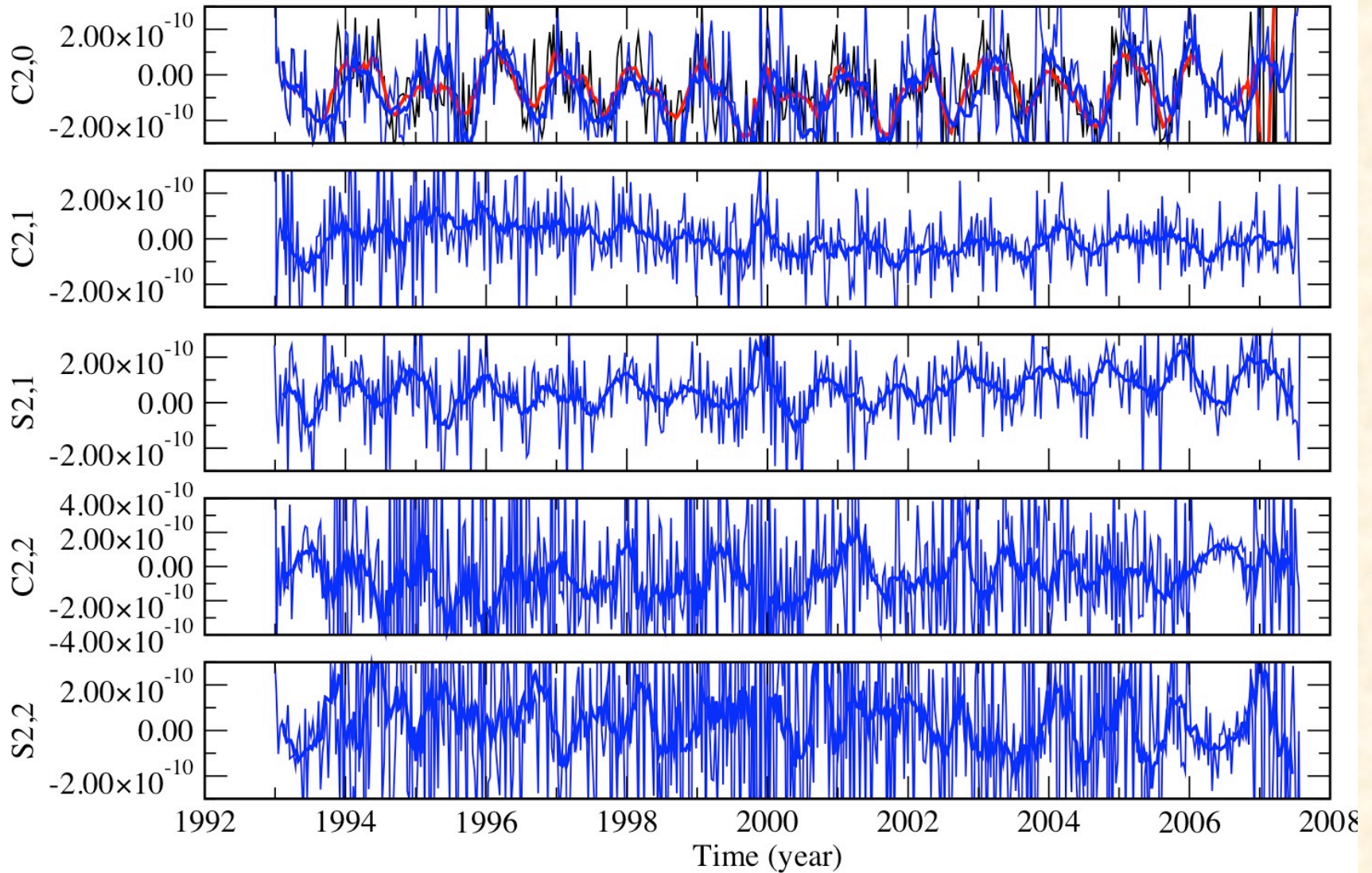
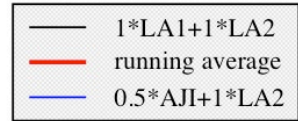
Osculating orbits (deg2 to 5): 1x LA1, 1x LA2



Geopotential: degree 2

Time series: Degree 2

Osculating orbits (deg2 to 5): 1/2x AJI, 1x LA2

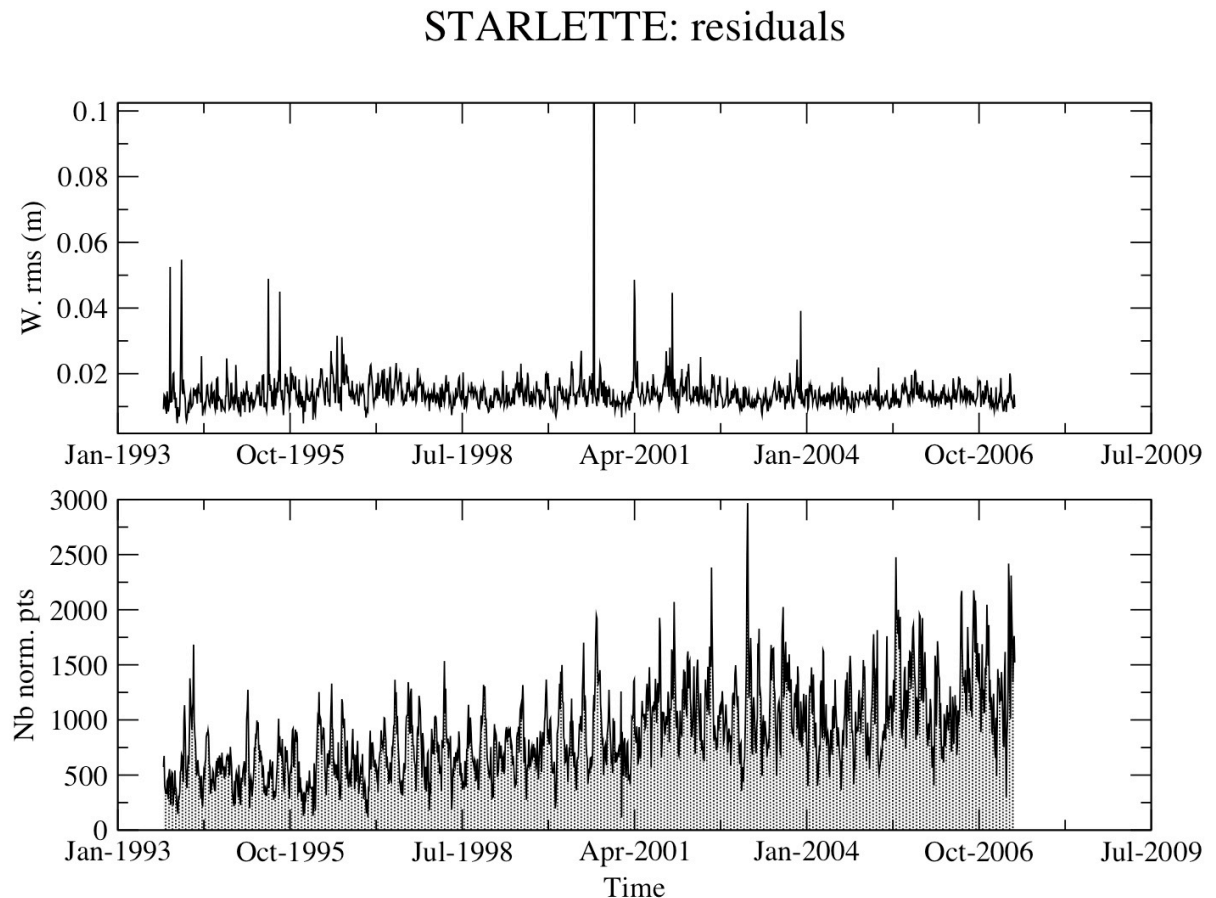


A combined solution

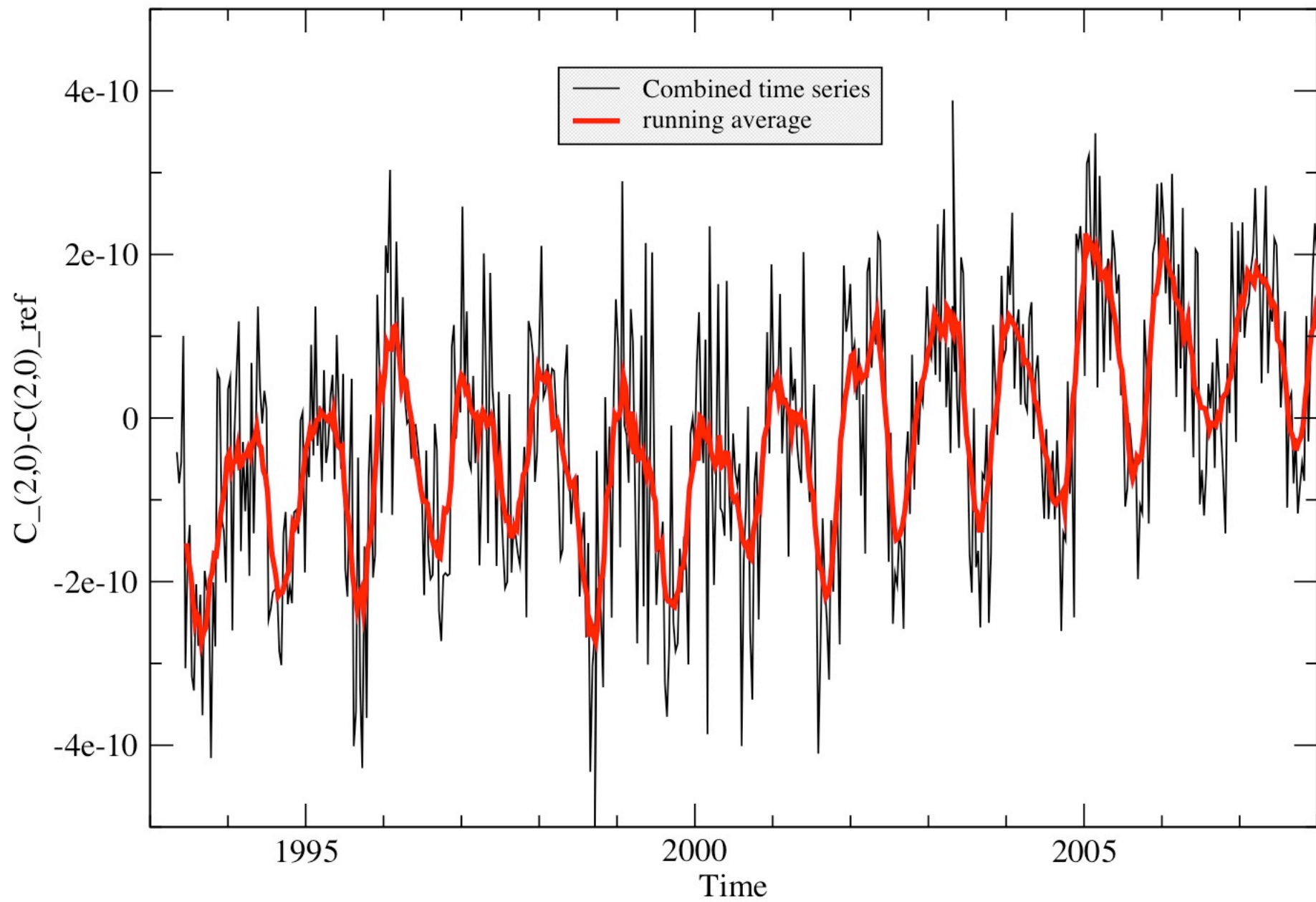
- Several satellites, weighted wrt the level of residuals (Helmert method)

- LA1: 0,9
- LA2: 1,2
- ET1: 3,3
- AJI: 0,18
- STA: 1,4

- Time series of coefficients



Time series of $C_{(2,0)}$: combined solution



Temporal variations over long time scales ?

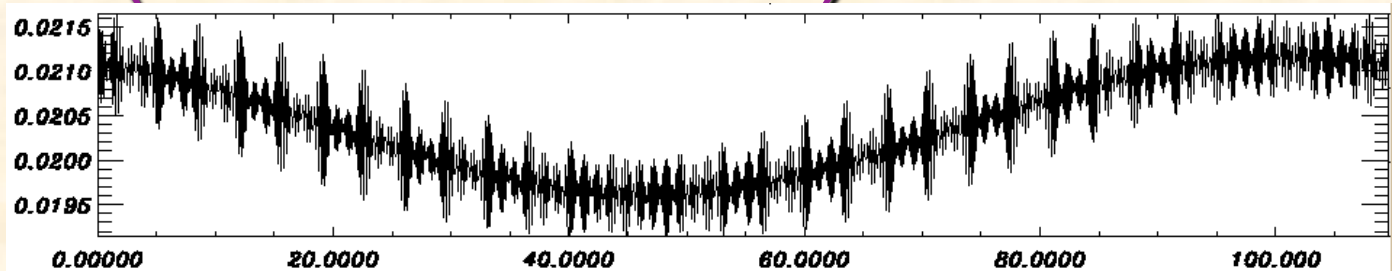
©	GRIM5-C1	Cheng & Tapley, 2004	This study (osc. motion)	This study (mean motion)
J2dot	$3.05 \cdot 10^{-11} / \text{yr}$	$2.75 \cdot 10^{-11} / \text{yr}$	from $2.61 \cdot 10^{-11} / \text{yr}$ to $4.42 \cdot 10^{-11} / \text{yr}$...
J4dot	$3.67 \cdot 10^{-11} / \text{yr}$		$4,41 \cdot 10^{-11} / \text{yr}$...
J3dot	$7.45 \cdot 10^{-12} / \text{yr}$		∅	∅

- Post glacial rebound:
 - J_{2n} dot : affect ascending node
 - J_{2n+1} dot : affect eccentricity vector
 - Tesseral terms: do not perturb orbits over long time scales
- Other origins:
 - Oceanic tides: 18.6 year tide, 9.3 year tide
 - Interannual events: El Nino, other mass transfer(atmosphere...)
- Methodology
 - Orbital model valid on long timescales
 - Inversion strategy suitable to detect small but cumulative effects
 - Few parameters adjusted,*

Long term orbital dynamics (*CODIOR* model)

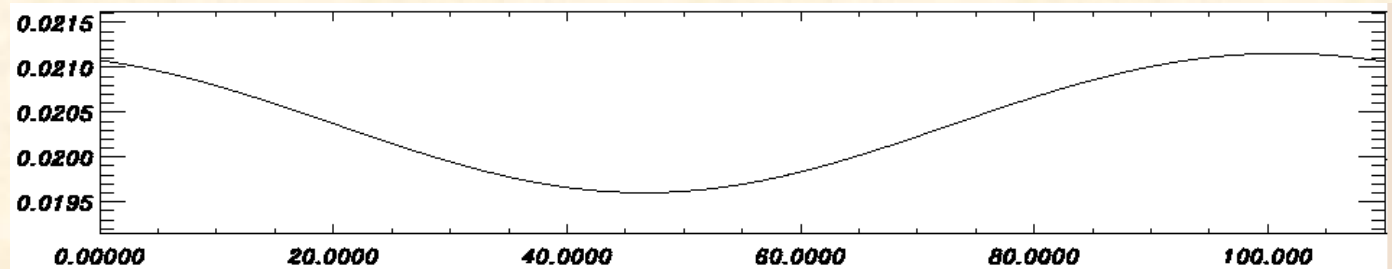
Osculating
motion

$$\frac{d\mathbf{E}}{dt} = SM(\mathbf{E}, \Sigma)$$
$$\mathbf{E}(t_0) =$$



Long
Period terms

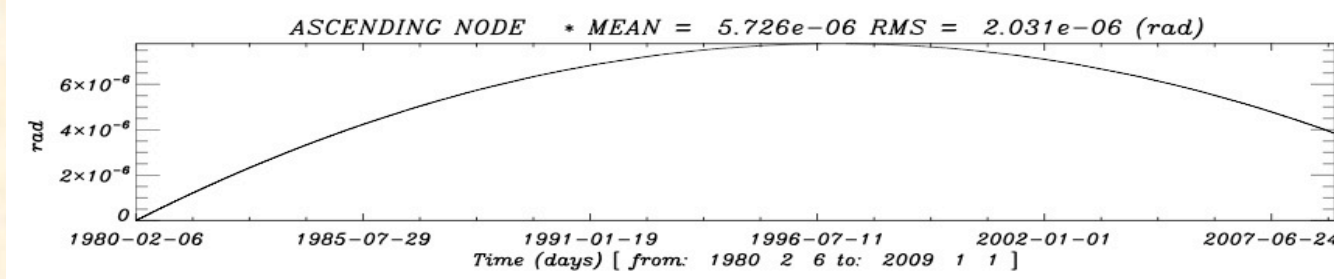
$$\frac{d\mathbf{E}'}{dt} = SM'(\mathbf{E}', \Sigma)$$



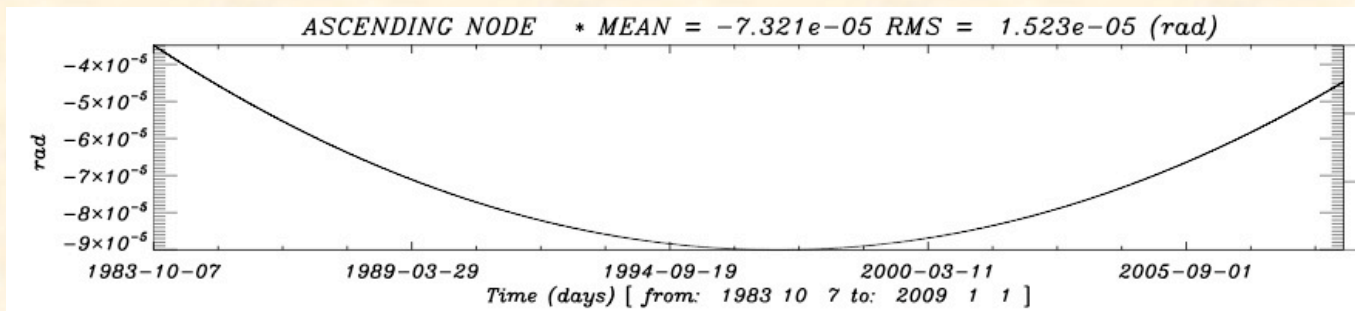
- Mean equations of motion obtained with an analytical averaging (5th order in J_2), which are integrated in a numerical way
 - J_2^5 , coupling effects $J_2 J_n$ up to $n=40$
 - Tesseral resonant terms (1st order)
 - Luni-solar effects up to degree 3, and coupling effects with J_2
 - Radiation pressure, shadow effects (numerical averaging)
 - Development in power series of the eccentricity (up to e^{12} for J_2)

Post-glacial rebound: *signal to be expected on the node*

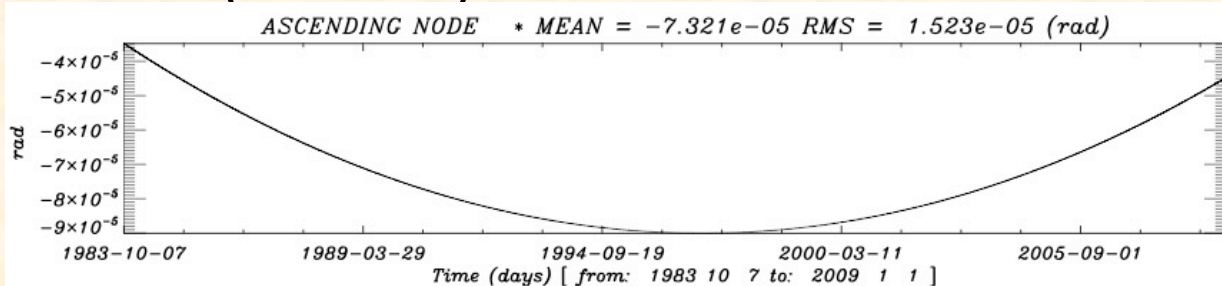
- LAGEOS1 (6000 km):



- AJISAI (1200km):

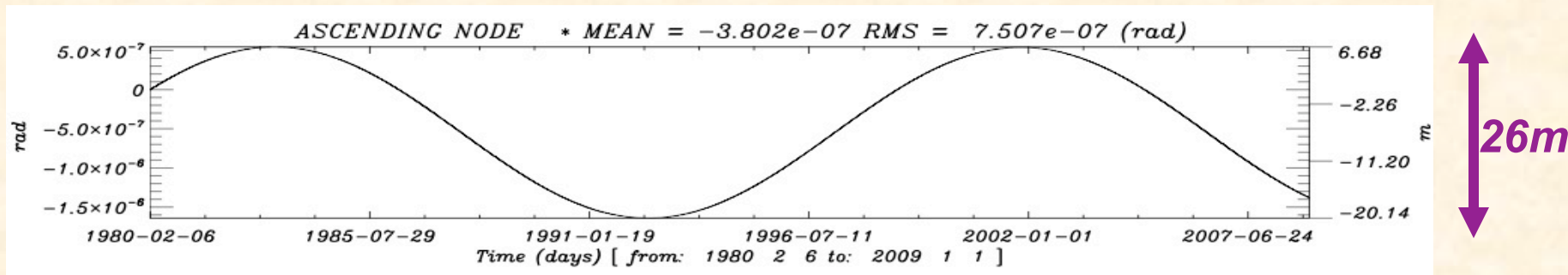


- STARLETTE (800 km):

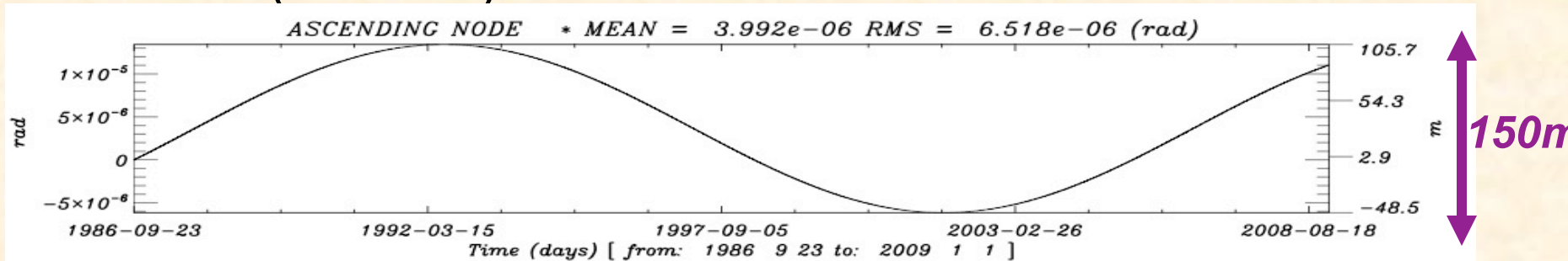


18.6 year tide: *signal to be expected on the node*

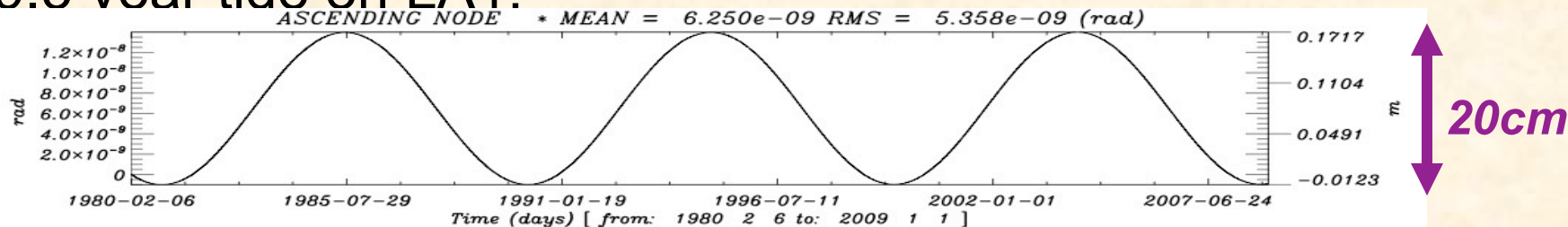
- LAGEOS1 (6000 km):



- AJISAI (1200km):

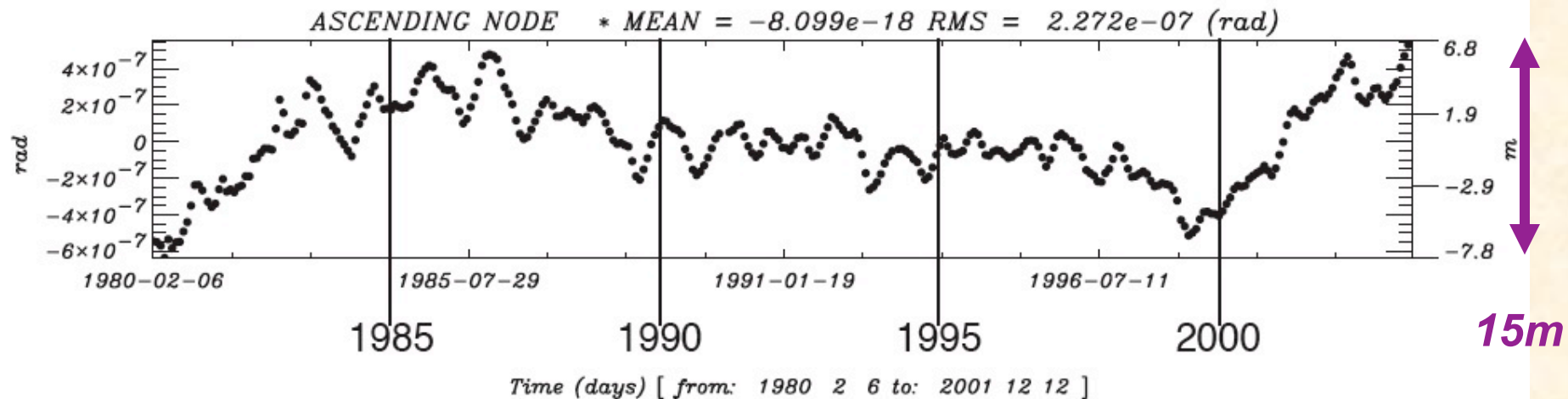


- 9.3 year tide on LA1:

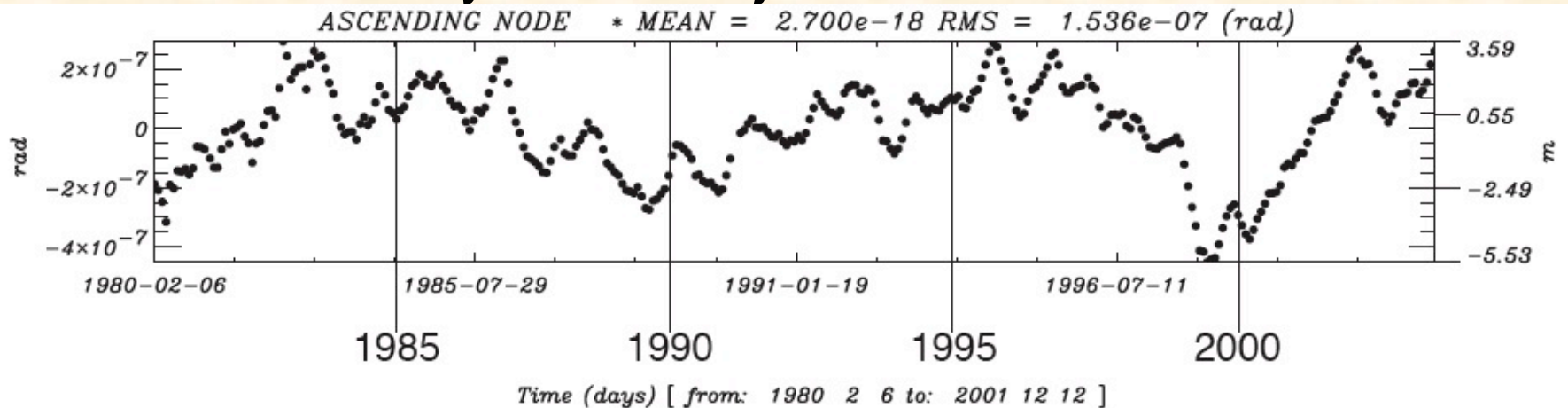


Post-fit residuals long term analysis: LAGEOS-1

- No geodynamical parameter adjusted



- J2dot and 18.6 year tide adjusted:



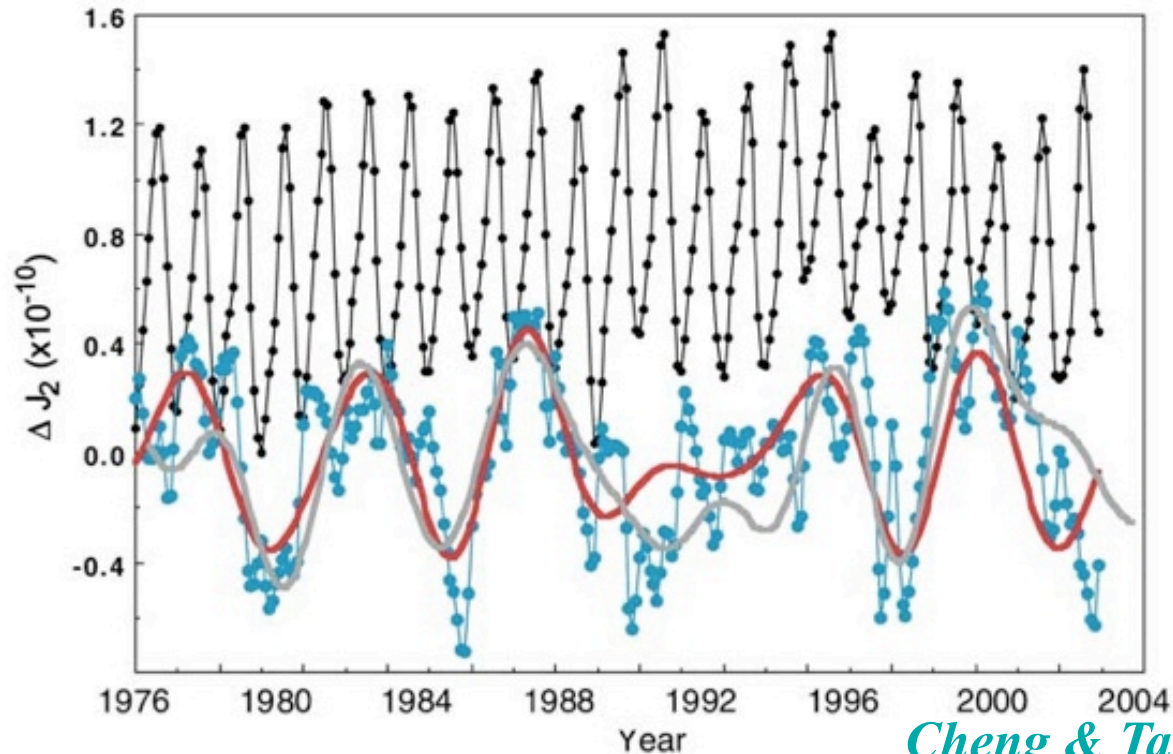
Adjusted values

Arc	Period of the arc	$C_{2,0}$	$\dot{C}_{2,0}$ <i>year</i> ⁻¹
1	1980-1996	$-0,108262643 \cdot 10^{-2} \pm 0,1 \cdot 10^{-9}$	$2,72 \cdot 10^{-11} \pm 0,1 \cdot 10^{-10}$
2	1980-2002	$-0,108262636 \cdot 10^{-2} \pm 0,4 \cdot 10^{-10}$	$2,70 \cdot 10^{-11} \pm 0,9 \cdot 10^{-12}$
3	1980-2002	$-0,108262636 \cdot 10^{-2} \pm 0,4 \cdot 10^{-10}$	$2,83 \cdot 10^{-11} \pm 0,7 \cdot 10^{-12}$

Arc	Period of the arc	Ampl. <i>cm</i>	Phase <i>deg</i>	18.6 year tide		9.3 year tide			
				C <i>cm</i>	S <i>cm</i>	Ampl. <i>cm</i>	Phase <i>deg</i>	C <i>cm</i>	S <i>cm</i>
1	1980-1996	1,60	81	$1,58 \pm 0,1$	$0,27 \pm 0,5$	0,25	-7	$0,03 \pm 0,09$	$-0,25 \pm 0,2$
2	1980-2002	1,45	77	$1,41 \pm 0,05$	$0,34 \pm 0,03$	0,49	-50	$0,37 \pm 0,05$	$-0,32 \pm 0,04$
3	1980-2002	1,50	78	$1,47 \pm 0,04$	$0,31 \pm 0,03$	-	-	-	-

- Aims:
 - Accuracy AND exactness of each coefficient: Characterizing mass transfer, decorrelation of estimations
 - Global modelling of the system Earth: gravity field, reference frame
- Analysis:
 - No influence of the « 1998 event »
 - The 9.3 year tide can not be adjusted in a realistic way

Conclusions



Cheng & Tapley., 2004

Figure 5. Variations in J_2 over tropical (blue circles) and extratropical areas (black circles) induced by soil moisture changes, the global soil-moisture-induced interannual variation in J_2 (red line), compared with the SOI (gray line) warm phase (<0) and cold phase (>0).

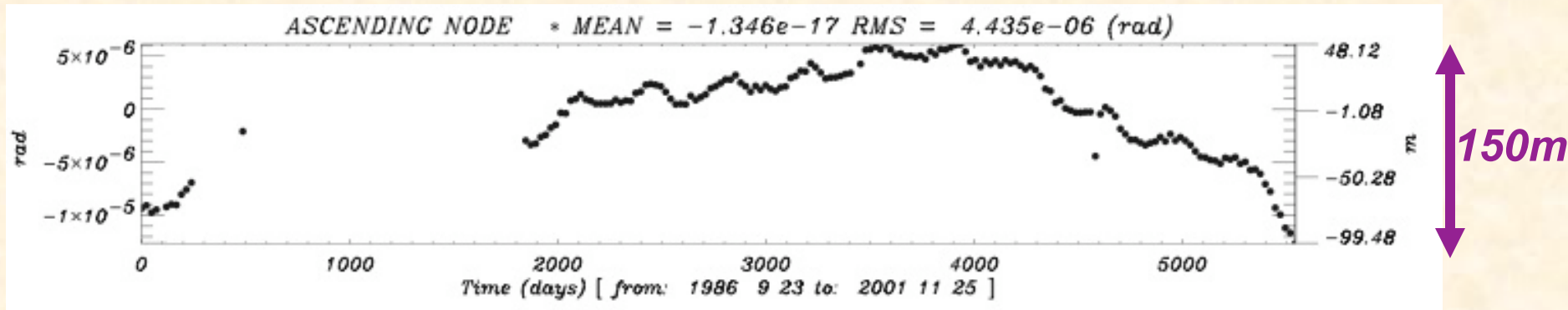
- Earth rotation, polar motion

Thank you for your attention !

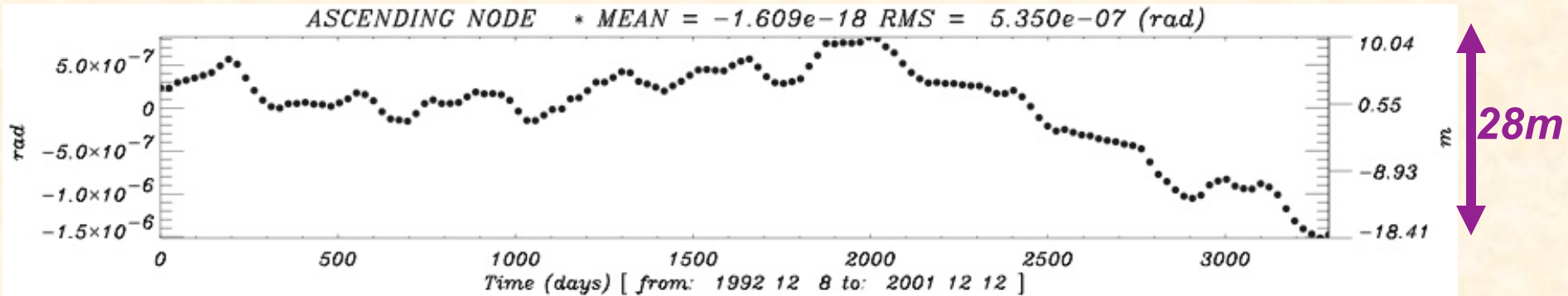


Post-fit residuals long term analysis: AJISAI, LAGEOS-2

- AJISAI: No geodynamical parameter adjusted

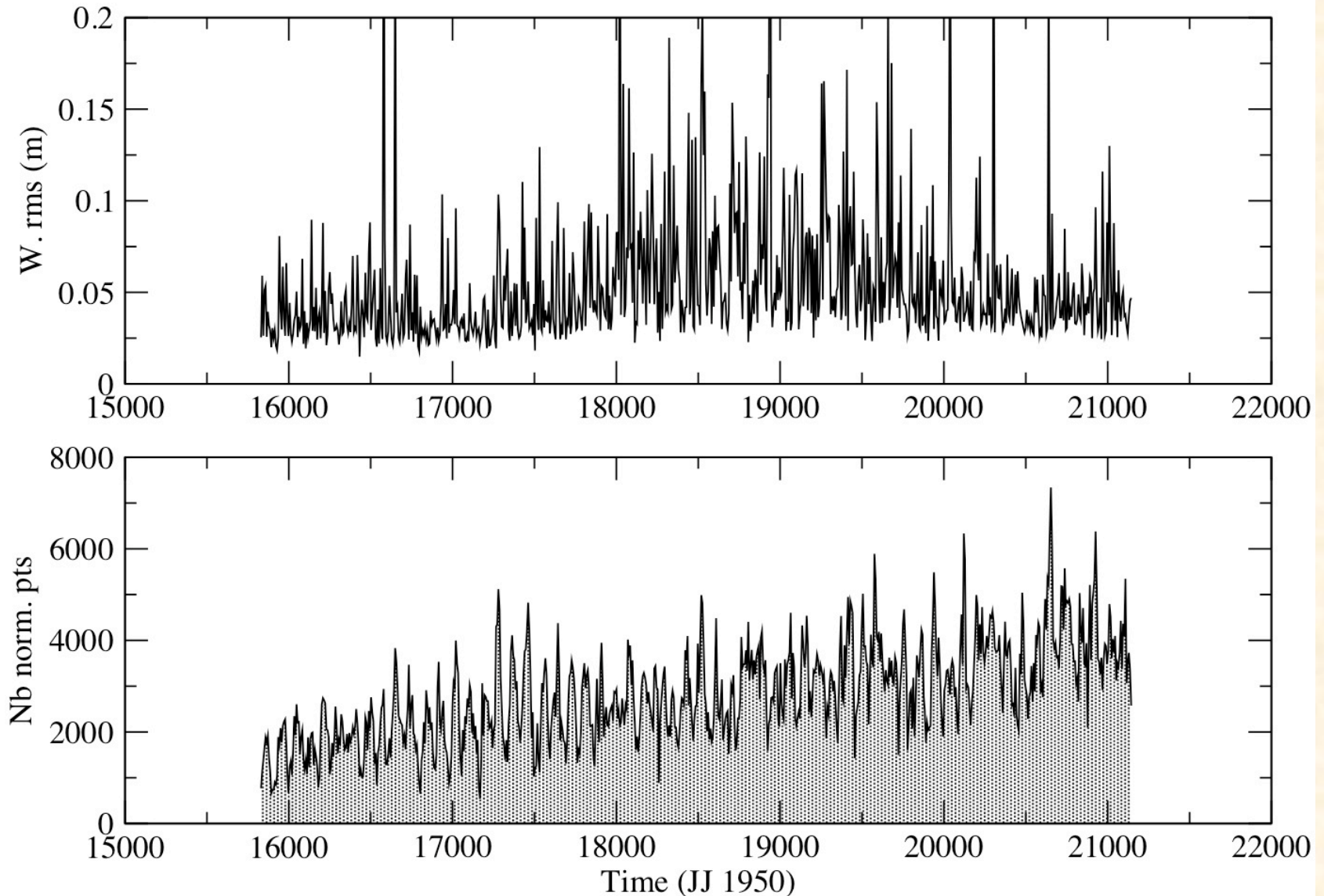


- LAGEOS2: No geodynamical parameter adjusted



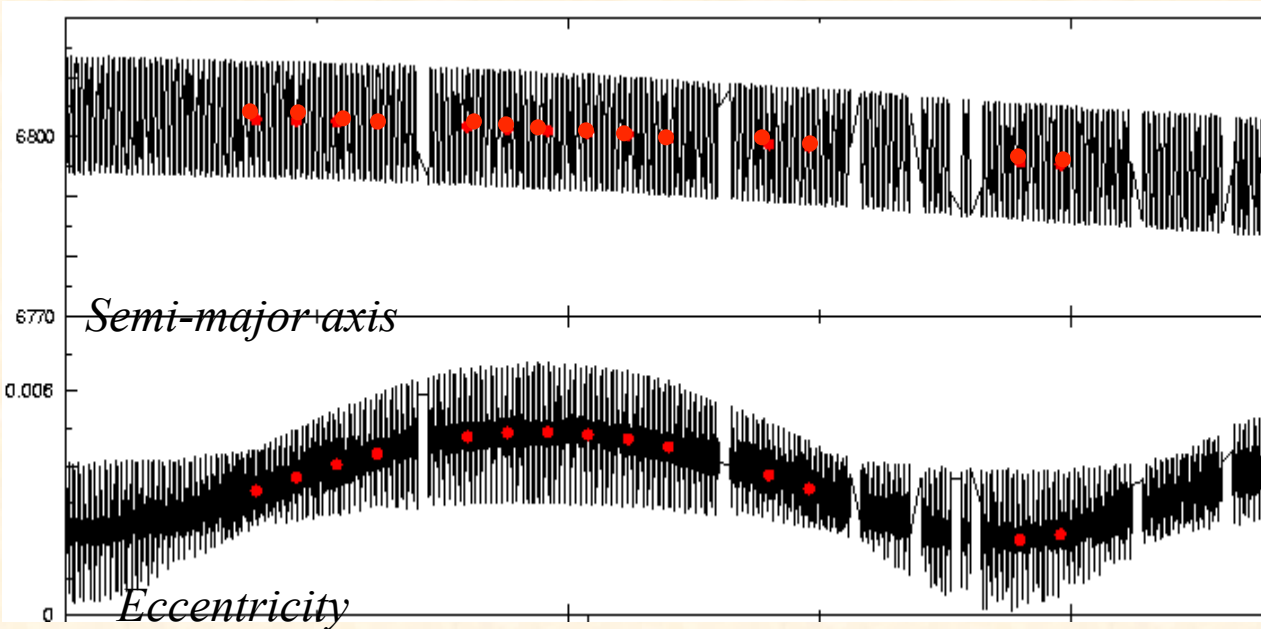
AJISAI: post-fit residuals analysis

AJISAI: residuals



Mean Observed Elements

- Osculating elements
- Mean Observed elements



- Analytical filtering

$$\Delta a = \quad \Delta \Omega =$$

$$\Delta e = \quad \Delta \omega =$$

$$\Delta i = \quad \Delta M =$$

$$\bar{E}(t) =$$

$$E(t) - \Delta E(t)$$

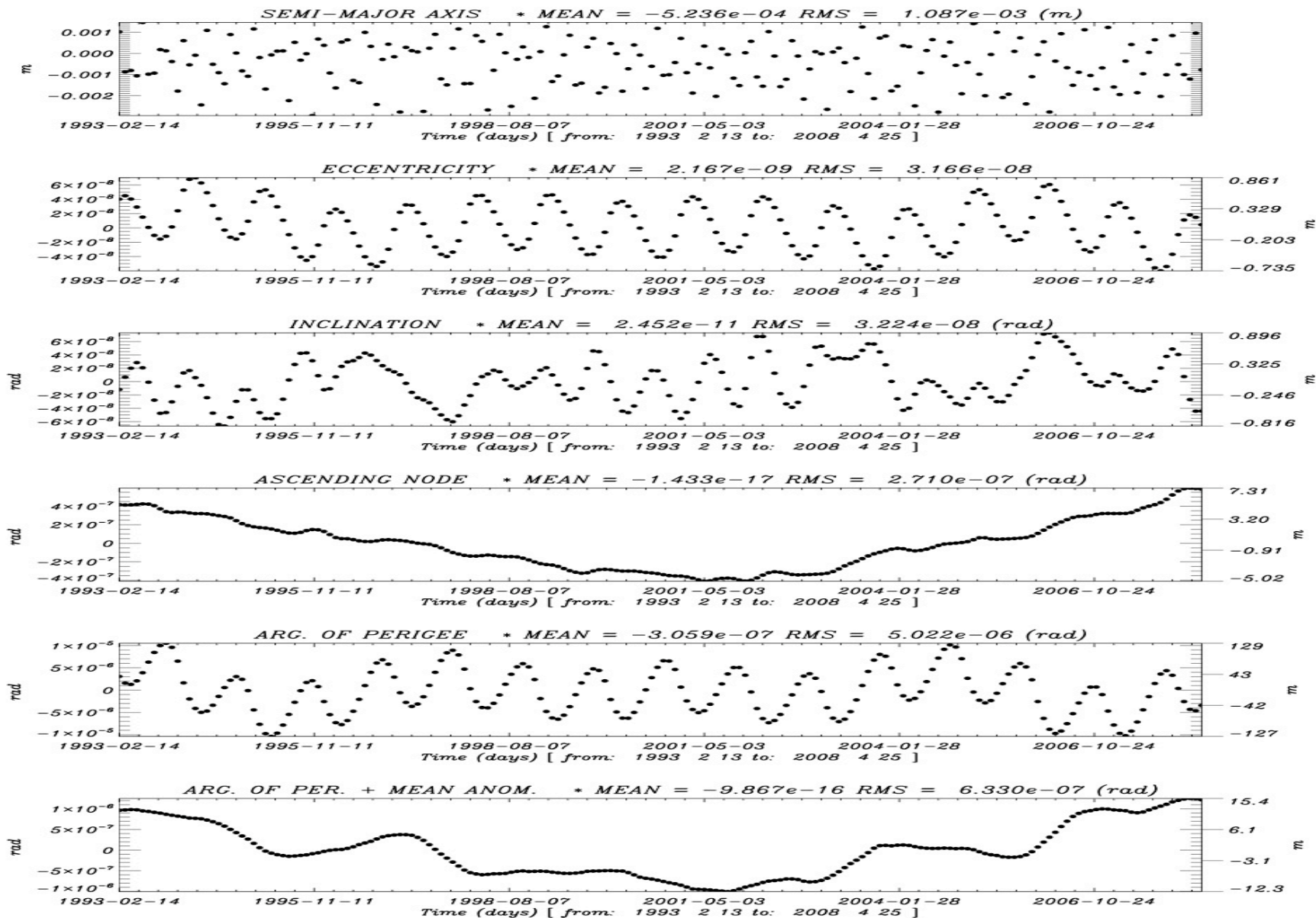
- Numerical step:
*filtering of residual
short periodic terms*

MOE are built from osculating orbits once for all:

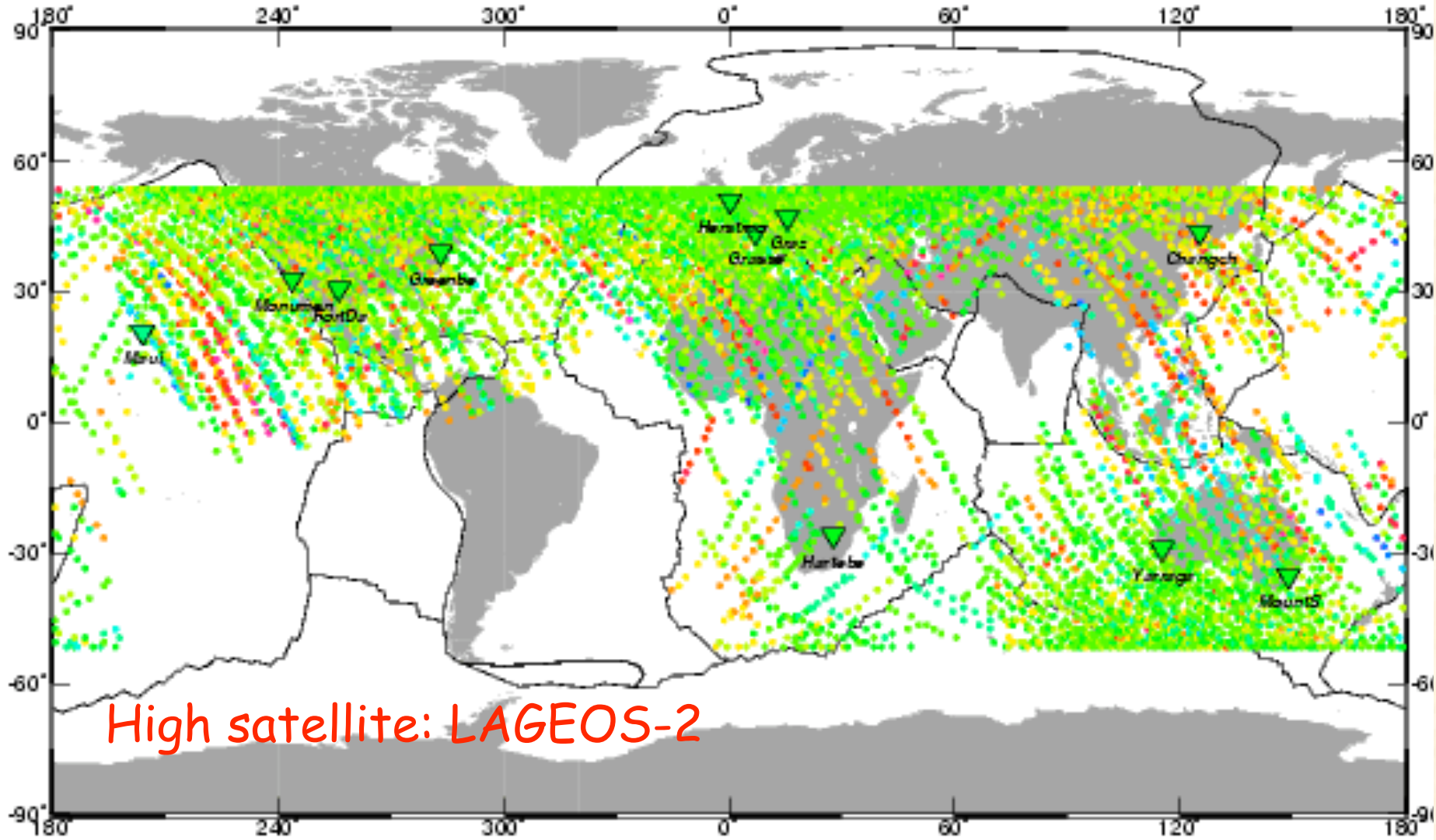
- in our database: **LA1** (feb 1980), **LA2** (dec 1992), **AJI** (sept 1986),
STA (dec 1983), **STE** (nov 1993), **T/P** (mar 1994), **CHAMP** (2001)

- scheduled: ET1, ET2, GPS34, and others...

Consistency of the method: results of a simulation



ILRS network and satellite tracking



Impact on the LAGEOS-1 satellite

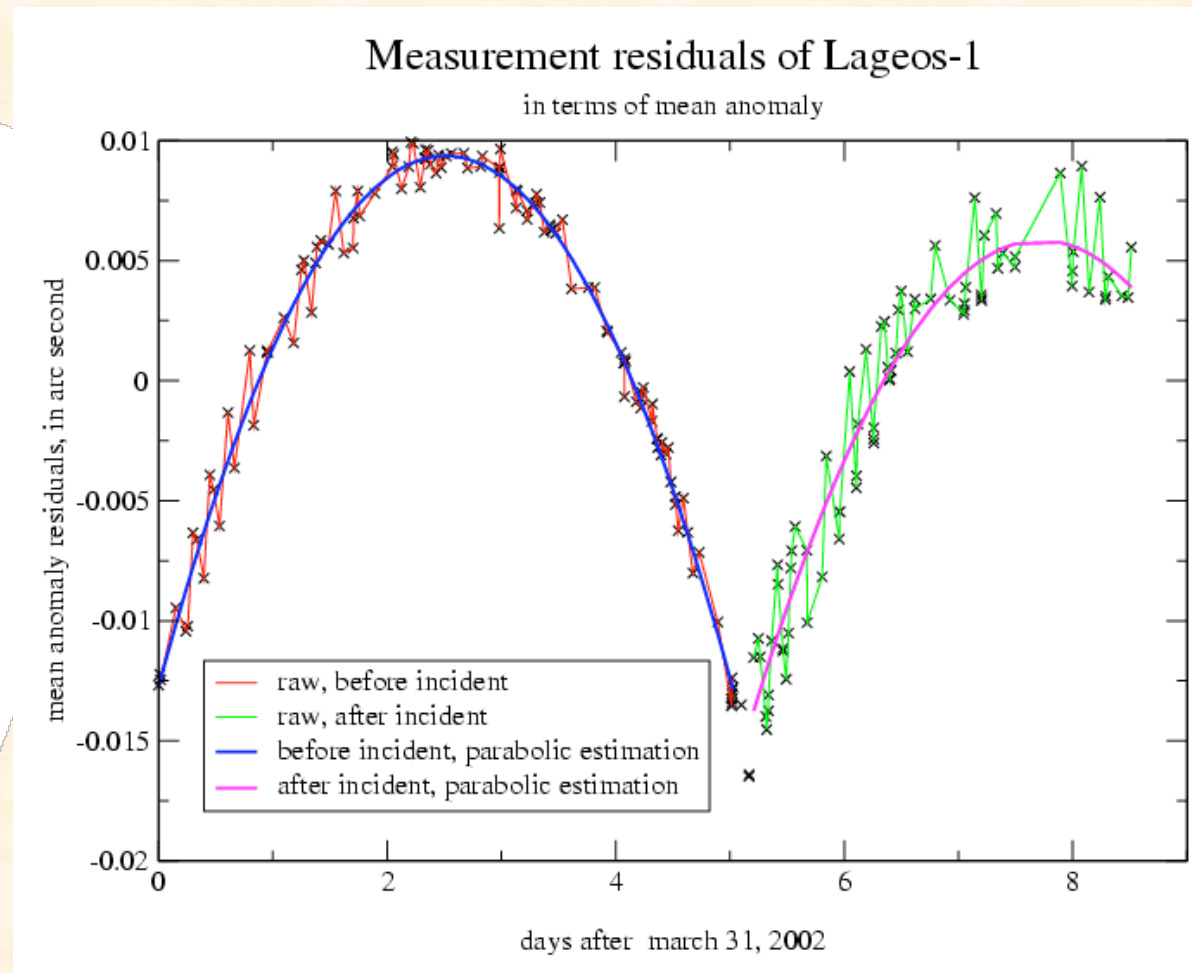
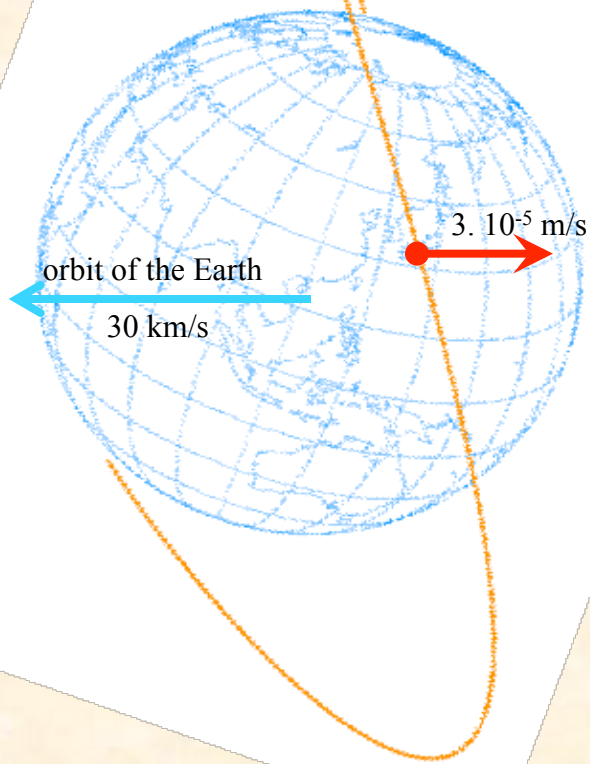
on April 5th, 2002, at 3:19:11 IAT above the Pacific ocean; lat. : 23°, long : 141°

Impulse (given by some mg space particle ???):

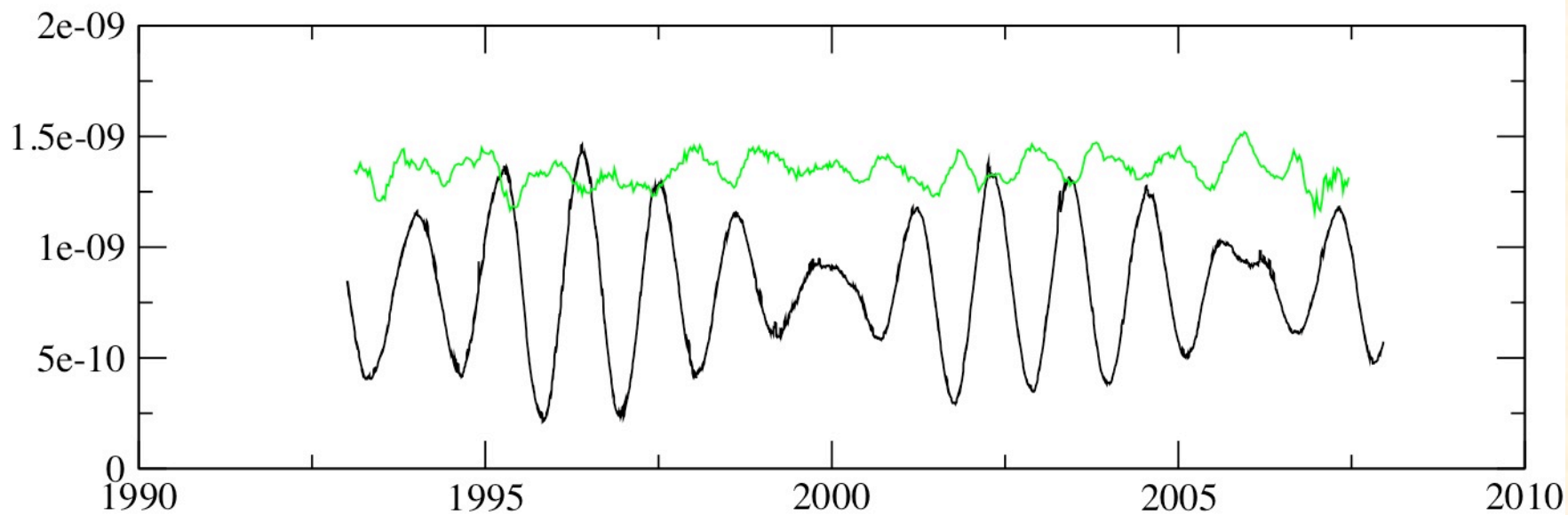
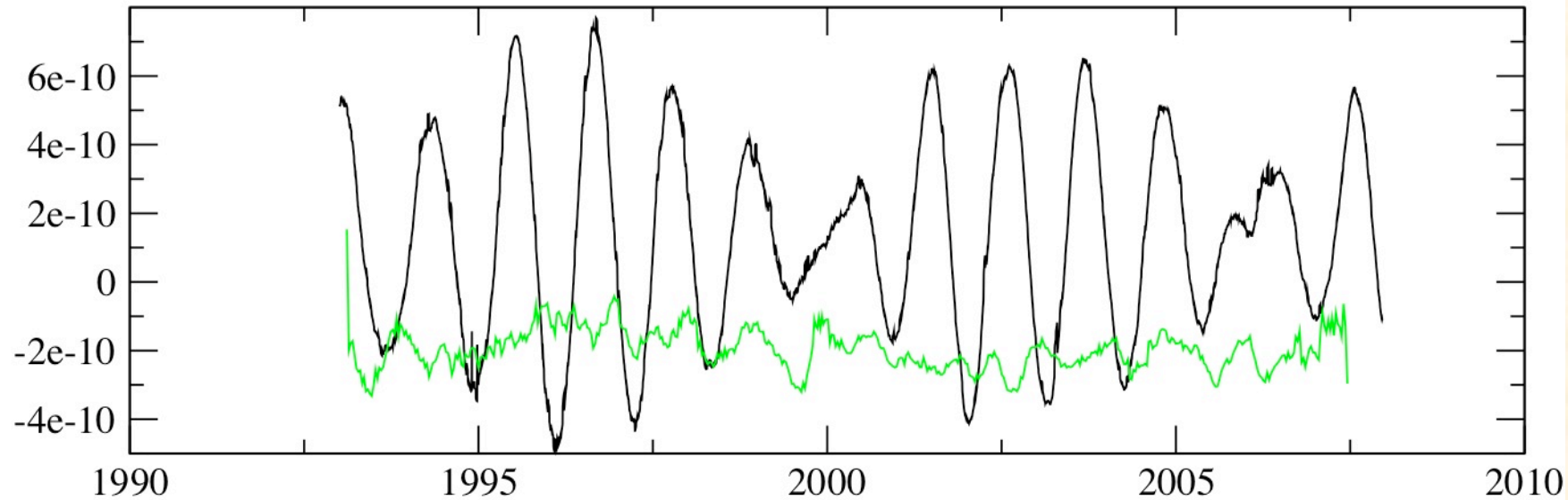
$0.66 \cdot 10^{-5} \text{ m/s}$ radial

$-0.77 \cdot 10^{-5} \text{ m/s}$ along track

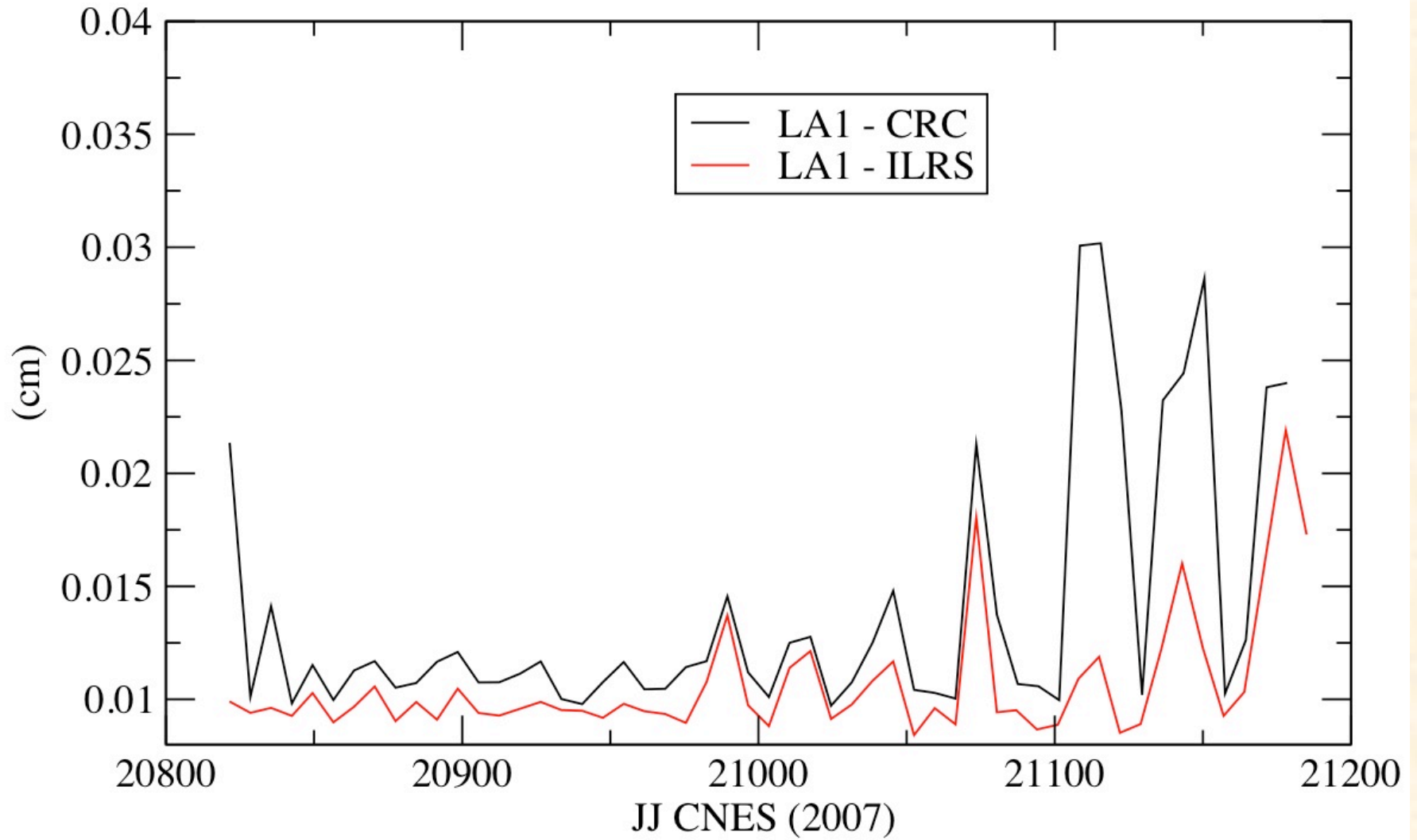
$-2.84 \cdot 10^{-5} \text{ m/s}$ cross track



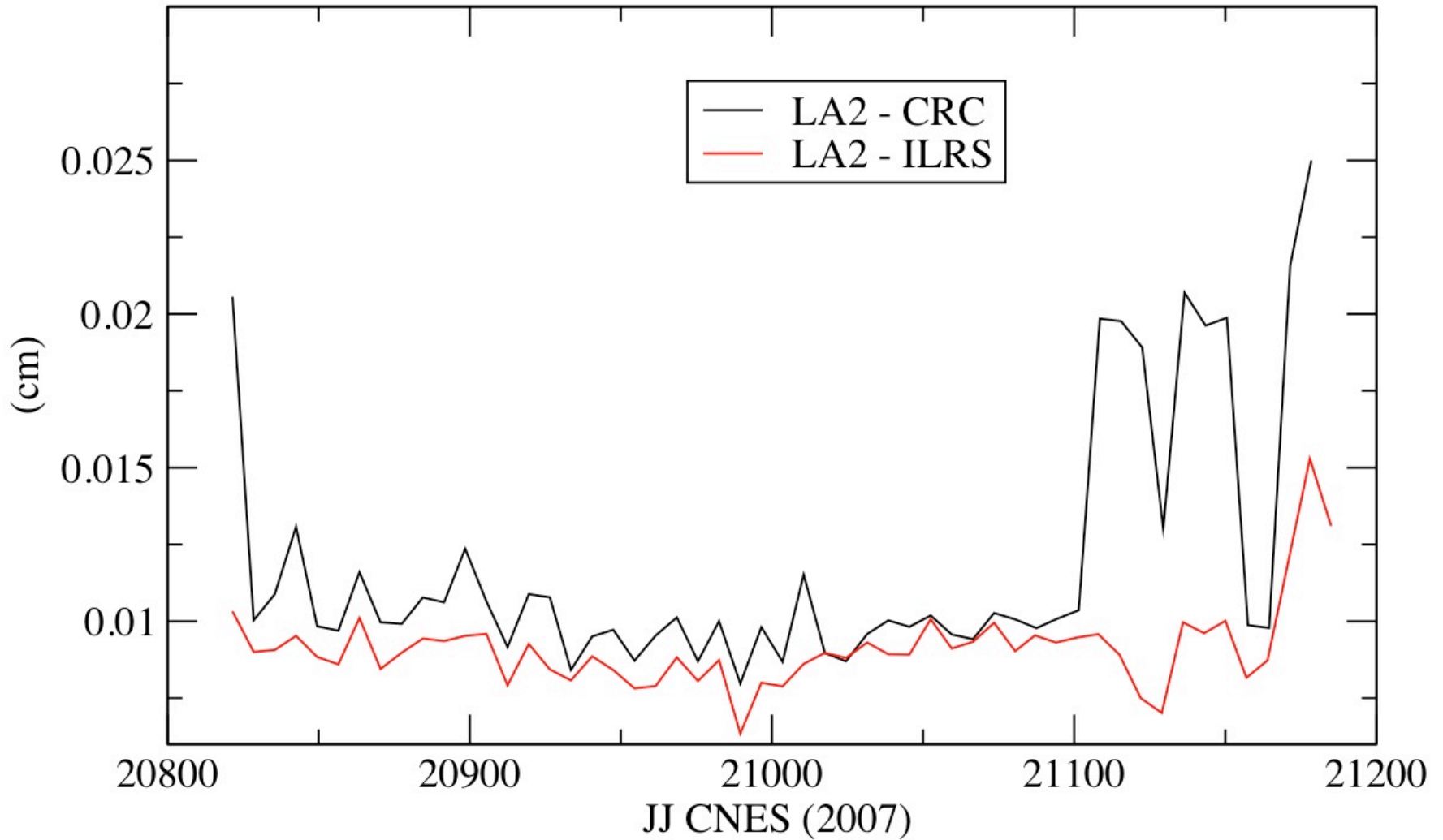
Comparison : *polar motion, and C_{21} S_{21}*



LAGEOS-1: weekly *post-fit residuals*



LAGEOS-2: weekly *post-fit residuals*



LAGEOS-1, -2: *Orbital modelling*

- ILRS

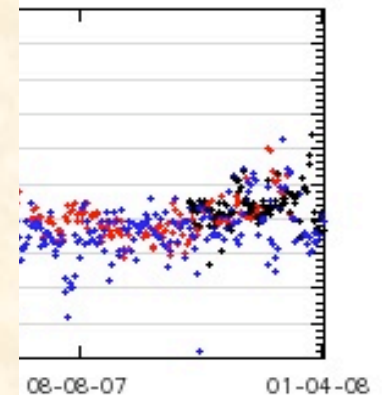
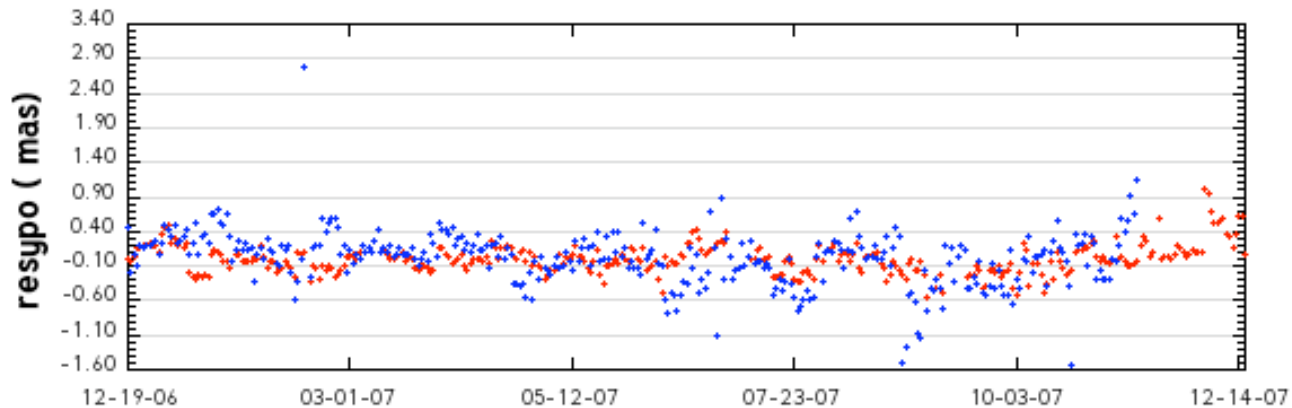
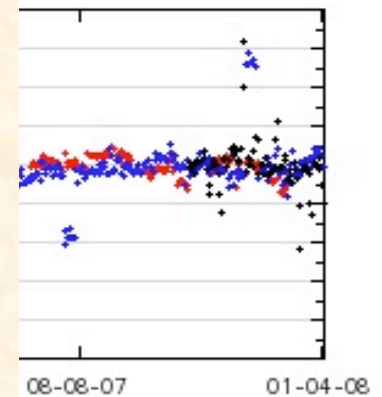
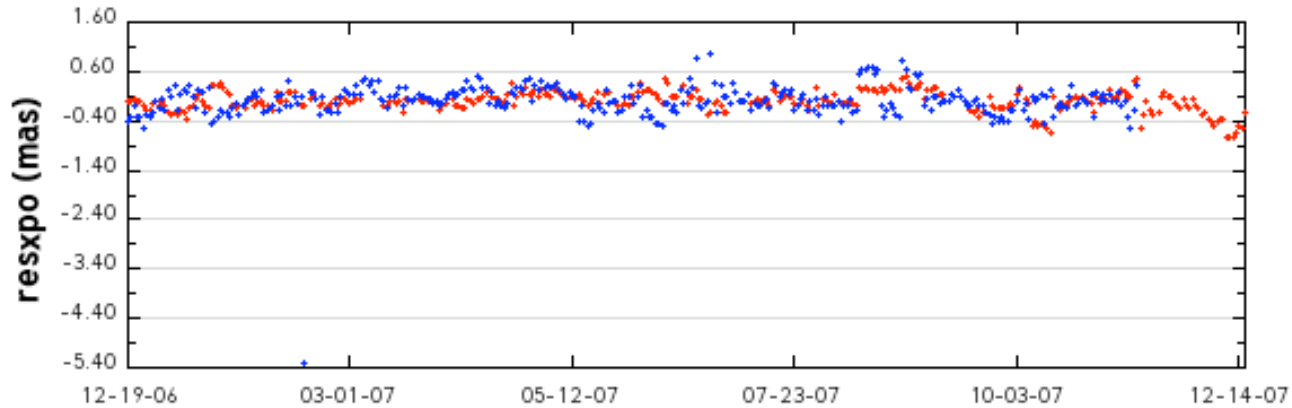
- Week n-1
- Albedo: Stephens model
- No atmospheric loading for the gravity field (DEPSTA = 0)
- No atmospheric loading for the stations (fes2002 = 0)
- Daily polar motion a priori
- Empirical coefficients: BT, BTC, BTS, BNC, BNS

- CRC

- Week n-3
- Polar motion a priori: C04
- DEPSTA = 1, fes2002 = 1
- Albedo : Grids
- Empirical coefficients: BT, BTC, BTS, BNC, BNS

ILRS operational products

EOP: Res wrt c04 (2006-2008)

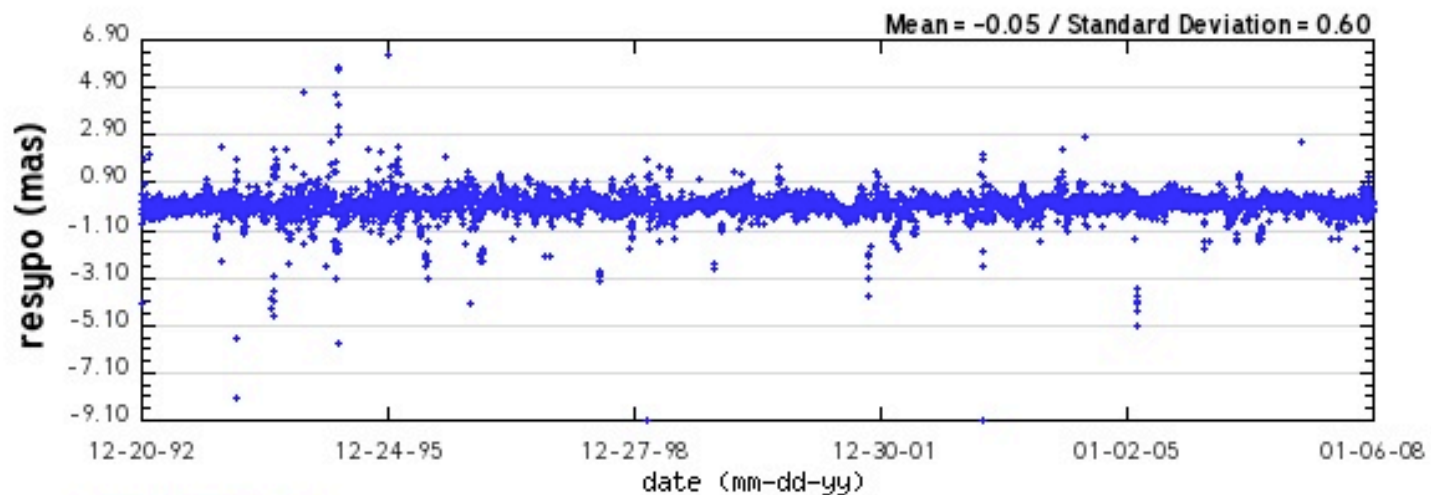
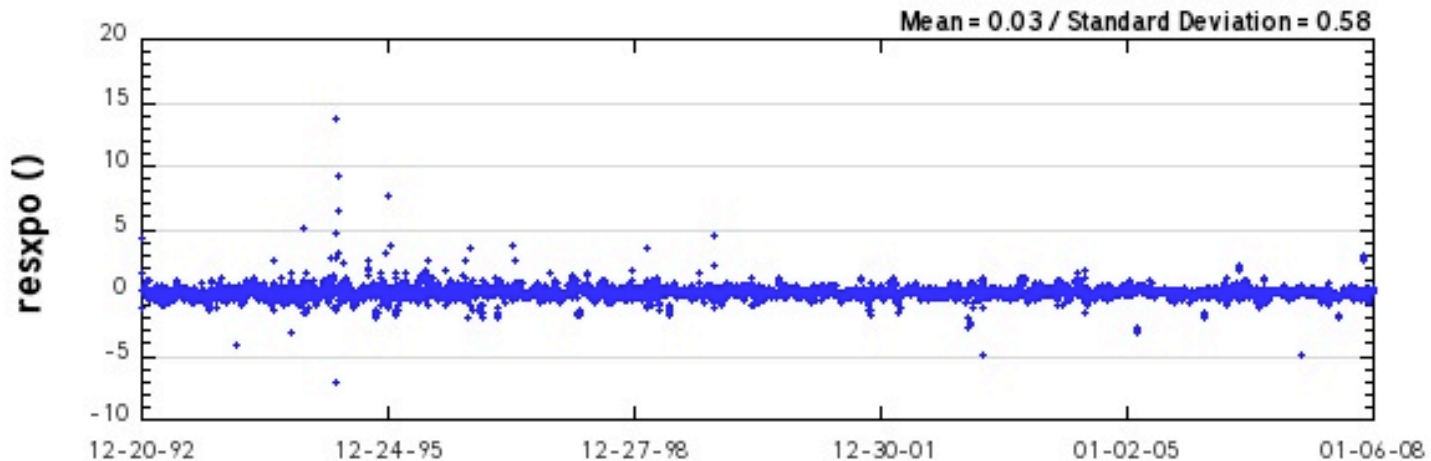


	<i>X(mas)</i>	<i>Y (mas)</i>
CRC	0,00 ± 0,20	0,00 ± 0,20
ILRS	0,01 ± 0,39	0,02 ± 0,40

Solution: CRC GRGS ILRSB
 Technic: SLR SLR SLR
 Analysis Center: OCA ILRS/GRGS ILRS/DGFI

ILRS operational products

EOP: Res wrt c04 (1993-2008)



Solution: GRGS

5492 data from 12-20-92 to 01-05-08

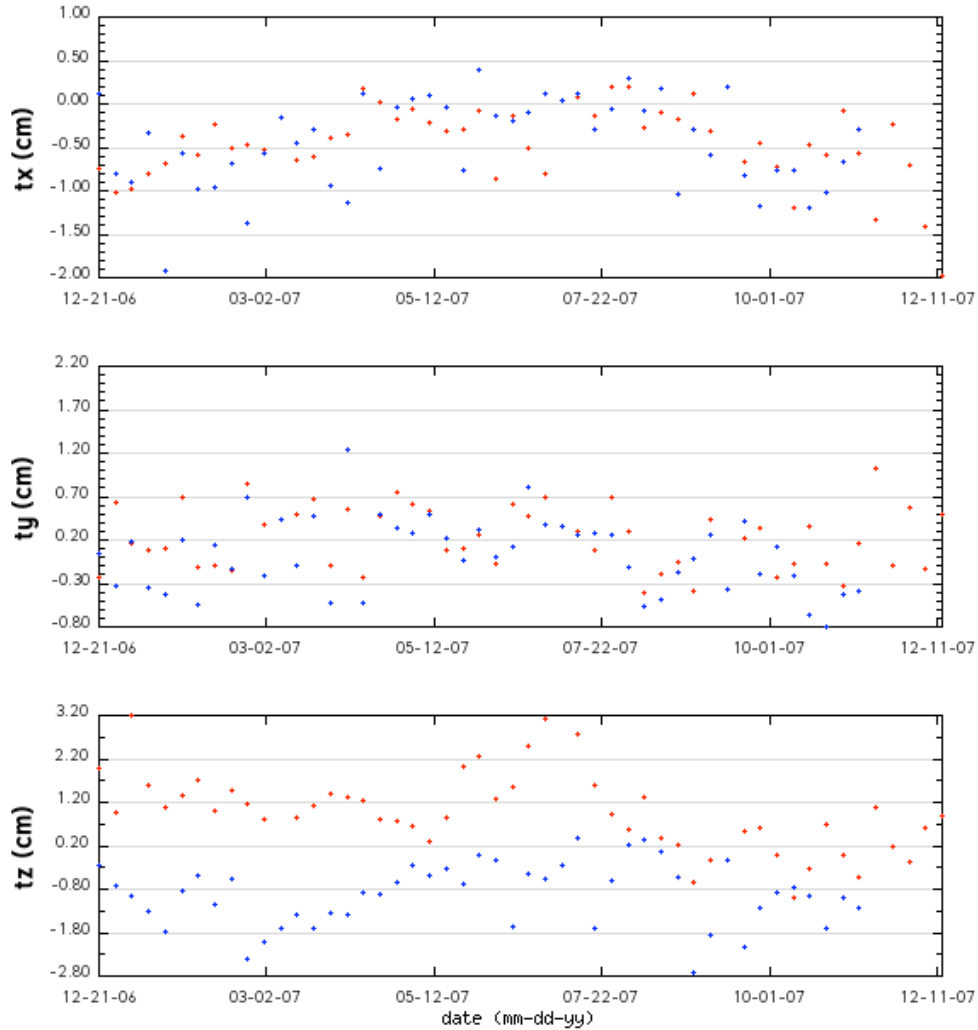
Technic: SLR

Analysis Center: ILRS/GRGS

Plot date: 04-09-08

Reference frame

Transformation Parameters: T



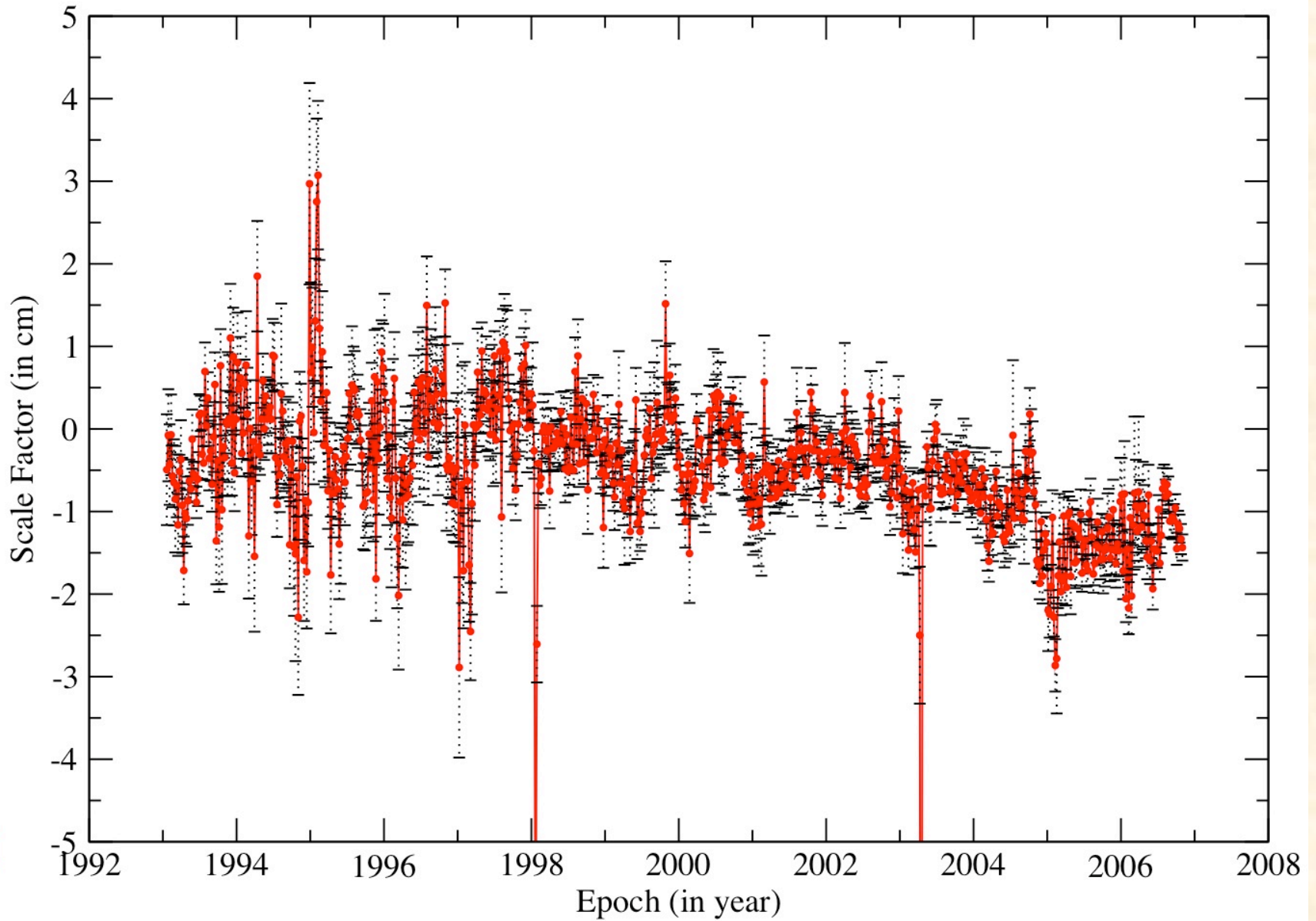
Solution: CRC GRGS
 Technic: SLR SLR
 Analysis Center: OCA ILRS/GRGS

Plot date: 01-14-08

	CRC	ILRS
Tx (cm)	$-0,47 \pm 0,44$	$-0,46 \pm 0,52$
Ty (cm)	$0,23 \pm 0,36$	$0,09 \pm 0,42$
Tz (cm)	$0,98 \pm 0,90$	$-0,93 \pm 0,73$

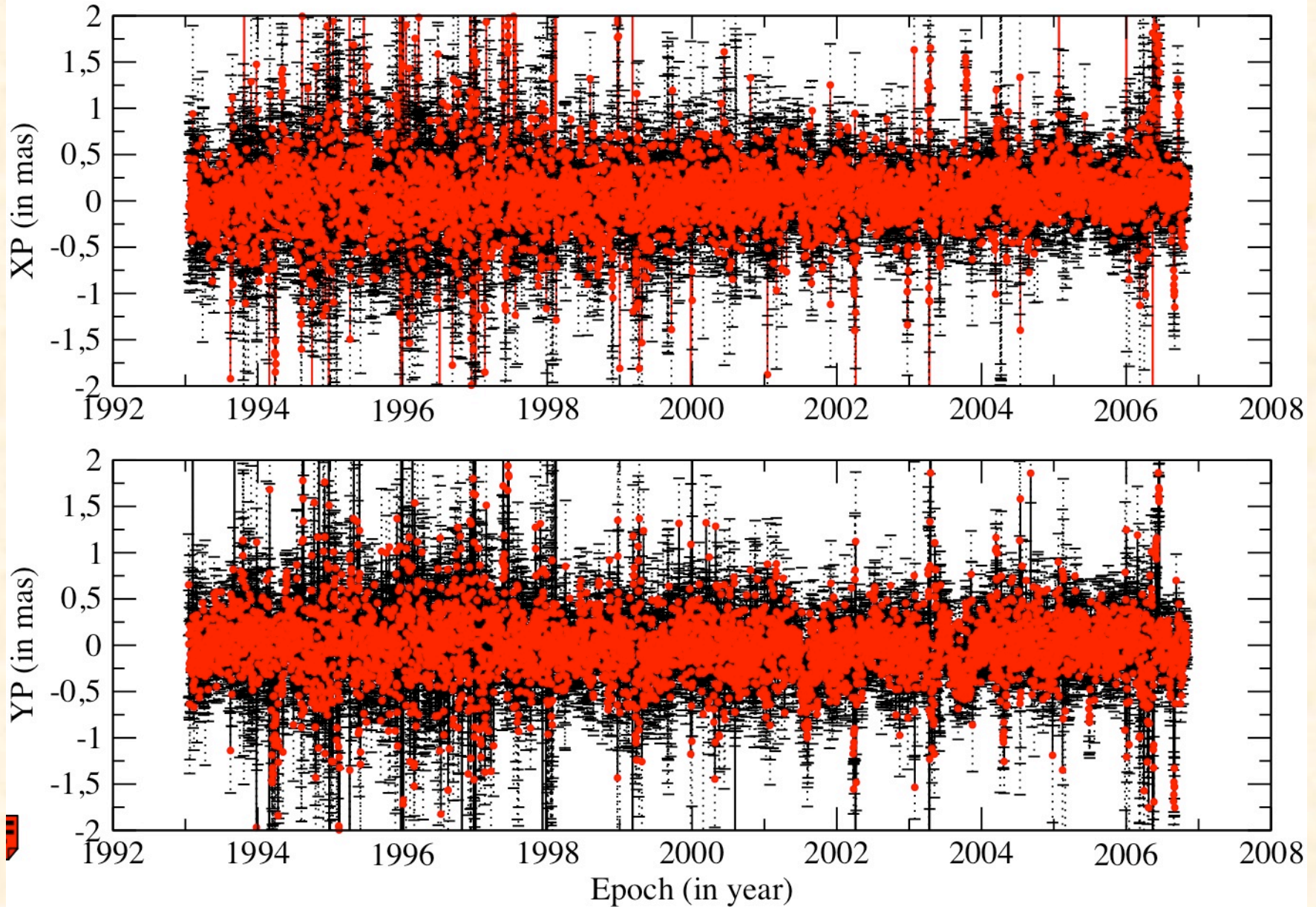
Post-fit reference frame: 1993-2007

scale factor



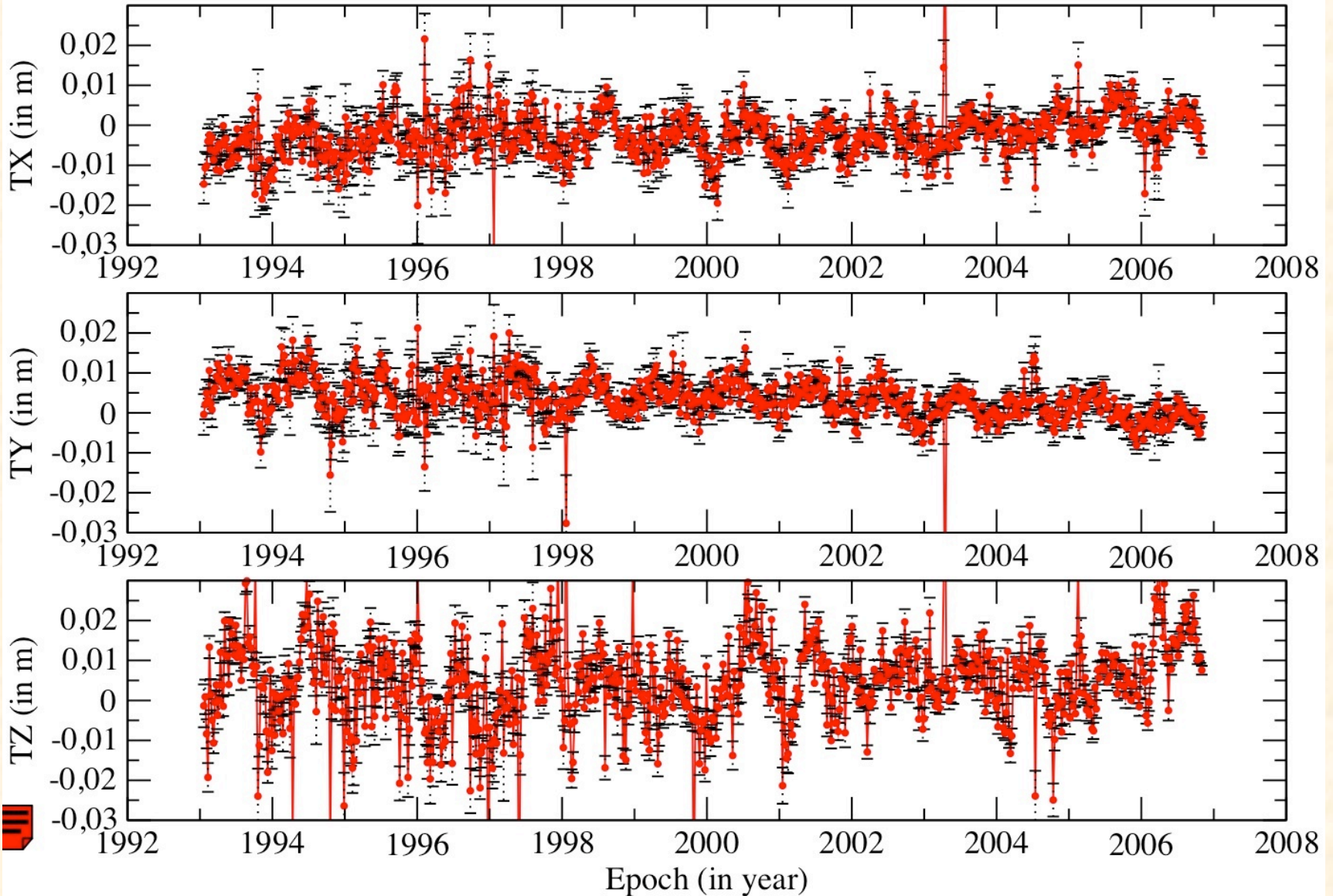
Post-fit reference frame: 1993-2007

polar motion (res wrt C04)



Post-fit reference frame: 1993-2007

transformation parameters



Post-fit reference frame: 1993-2007 *results*

	mean	rms
Xp (mas)	0,053	0,287
Yp (mas)	-0,028	0,288

	mean	rms
D (mm)	-3,8	4,16

	mean	rms
Tx (mm)	-1,99	4,96
Ty (mm)	2,97	4,5
Tz (mm)	6,55	8,77

Inversion LA1 - LA2

- **CRC**

- Empirical Orbital parameters

Re-estimated under constraint

- Stacking LA1-LA2

- Constraints:

pole : $\pm 1m$

stations à $\pm 1m$

- Deriving SINEX file + projection ITRF 05

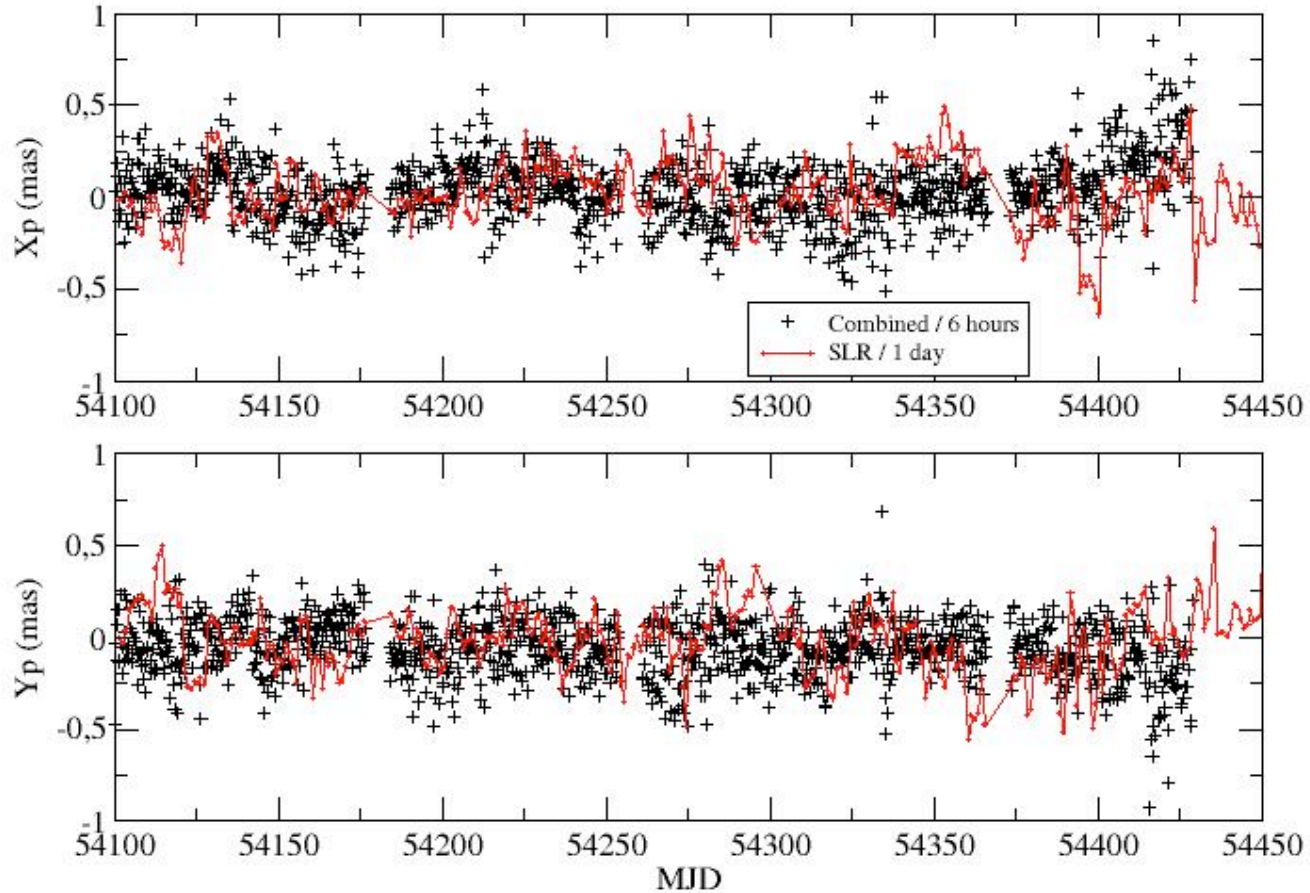
- **ILRS**

- MATLO : dynamical strategy (same parameters as orbit modelling)

- Bias : ILRS strategy :

No estimated bias, except for 4 stations, other bias only applied (ASI list)

Comparaison sol. SLR, sol. combinée / C04



Time series: Degree 2

Osculating orbits: LA1, LA2

